

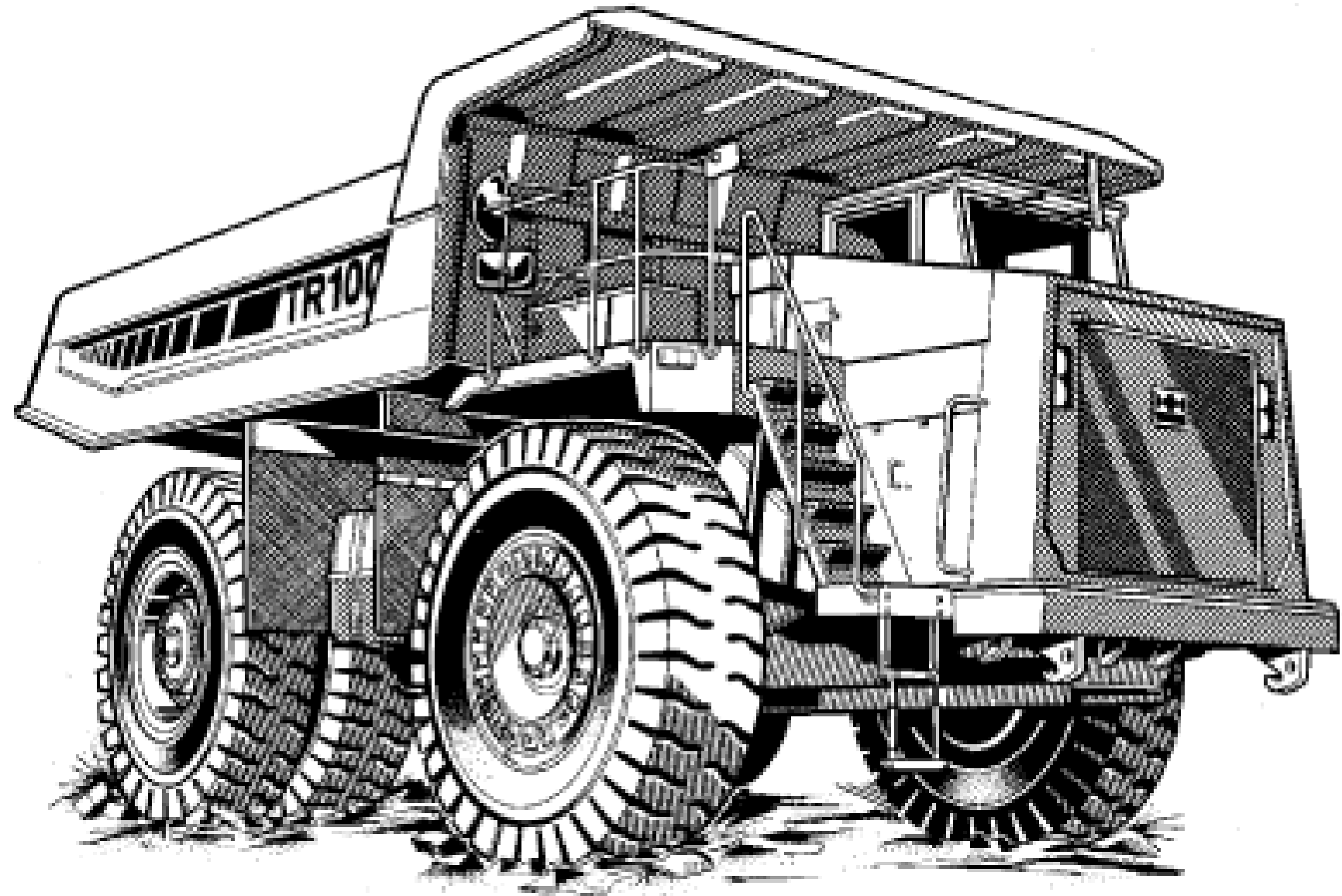
MOBILE HYDRULIC

BY: Dr Reza moradi

8th Sssion

6 june 2020

TREX TR 100
HYDRULIC CIRCUIT
PART 1:STEERING



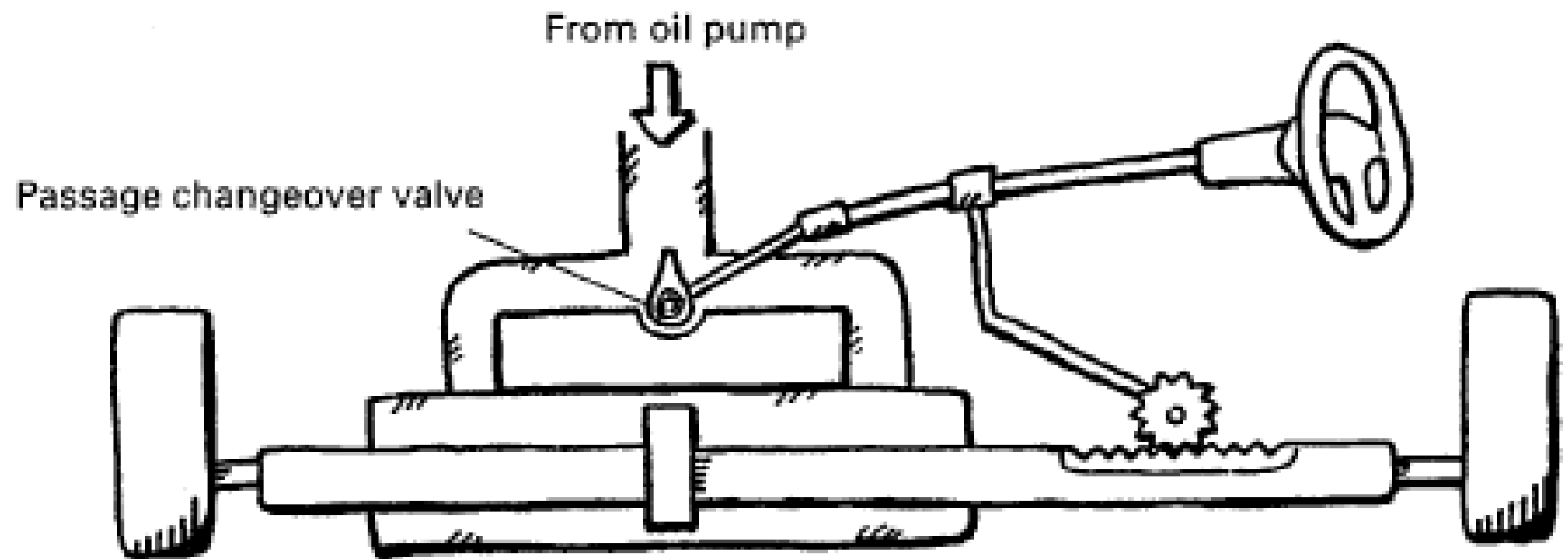


Fig. 4-16-T

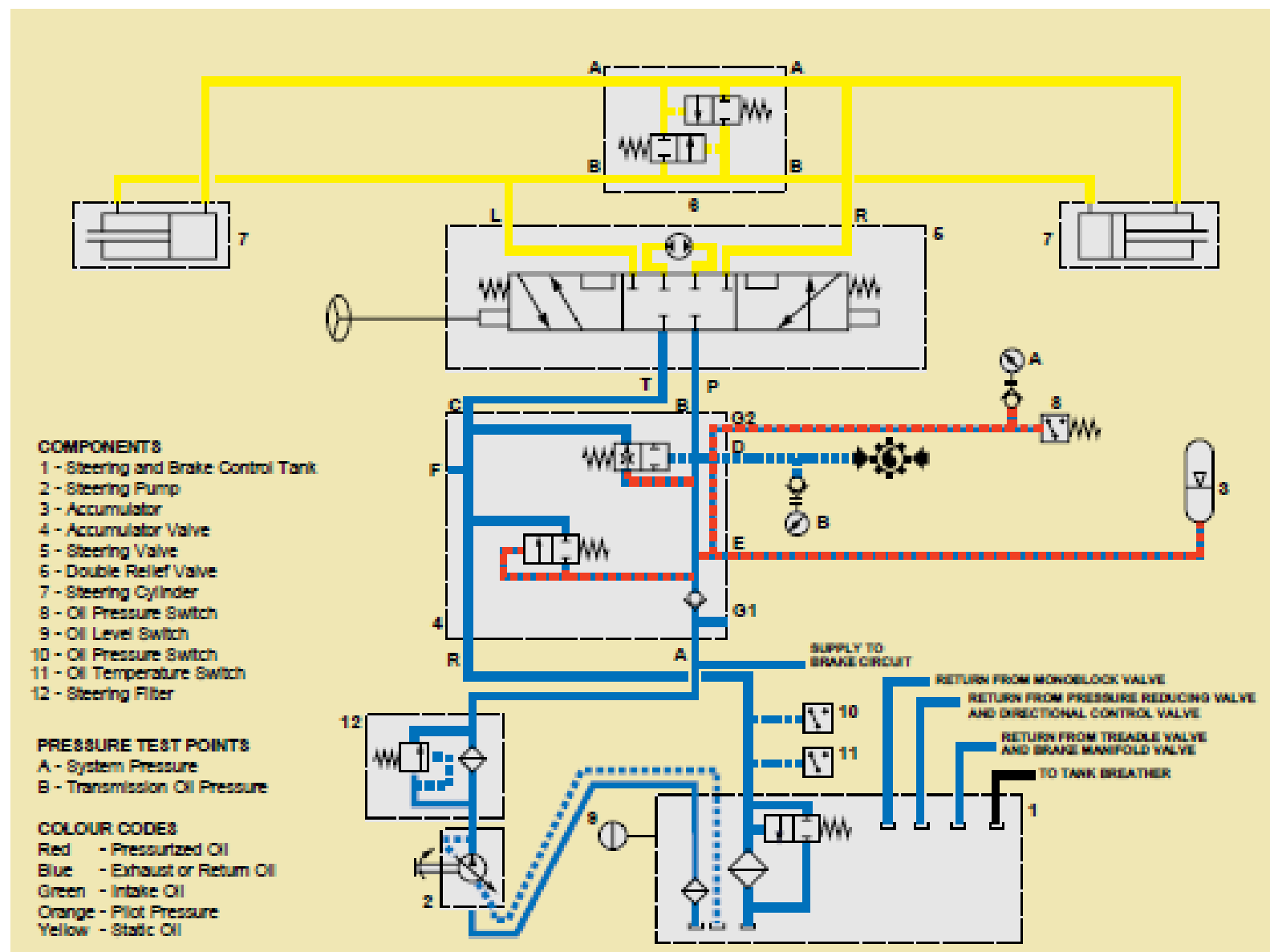
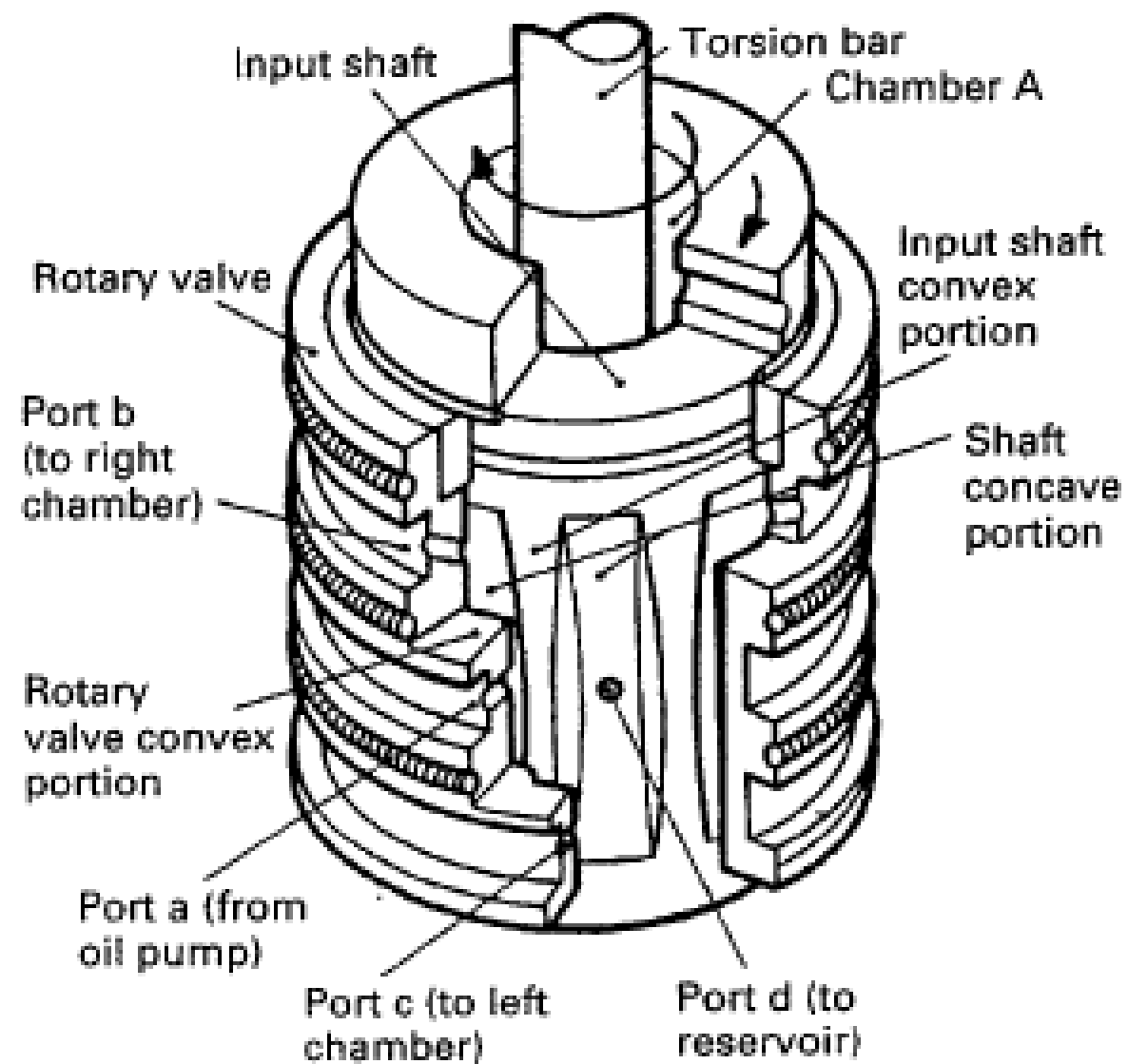
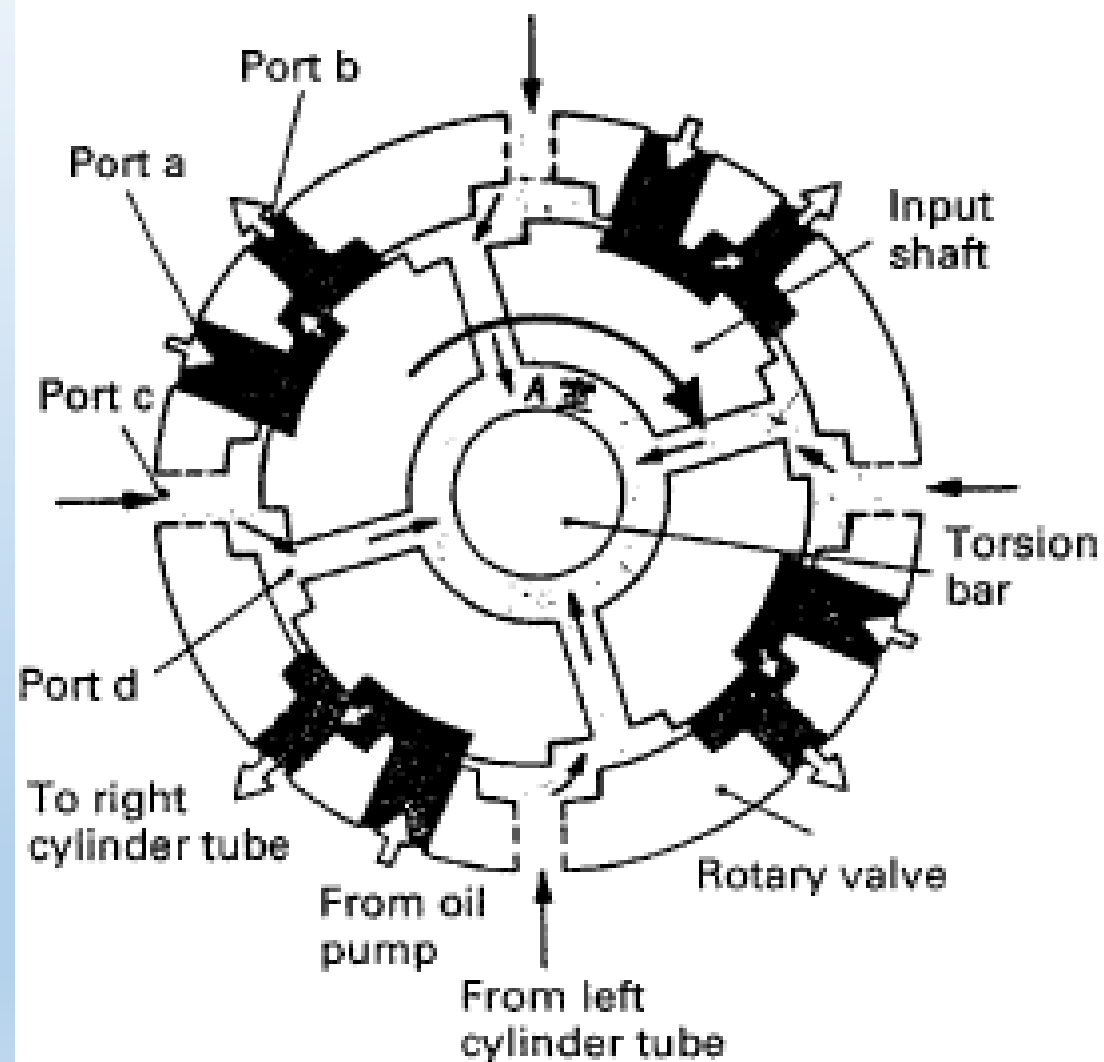
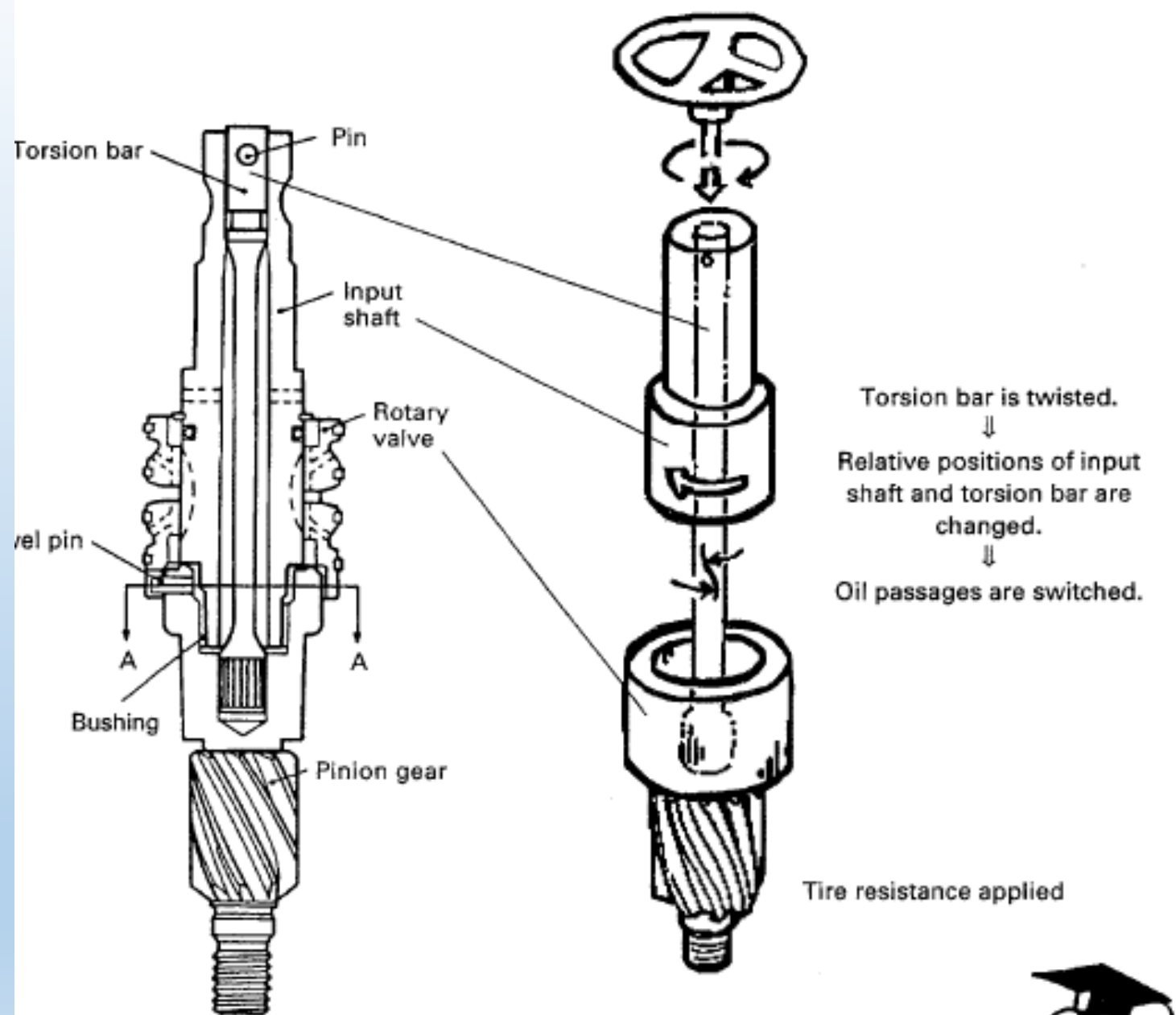


Fig. 2 - Steering System Schematic - Engine Shutdown





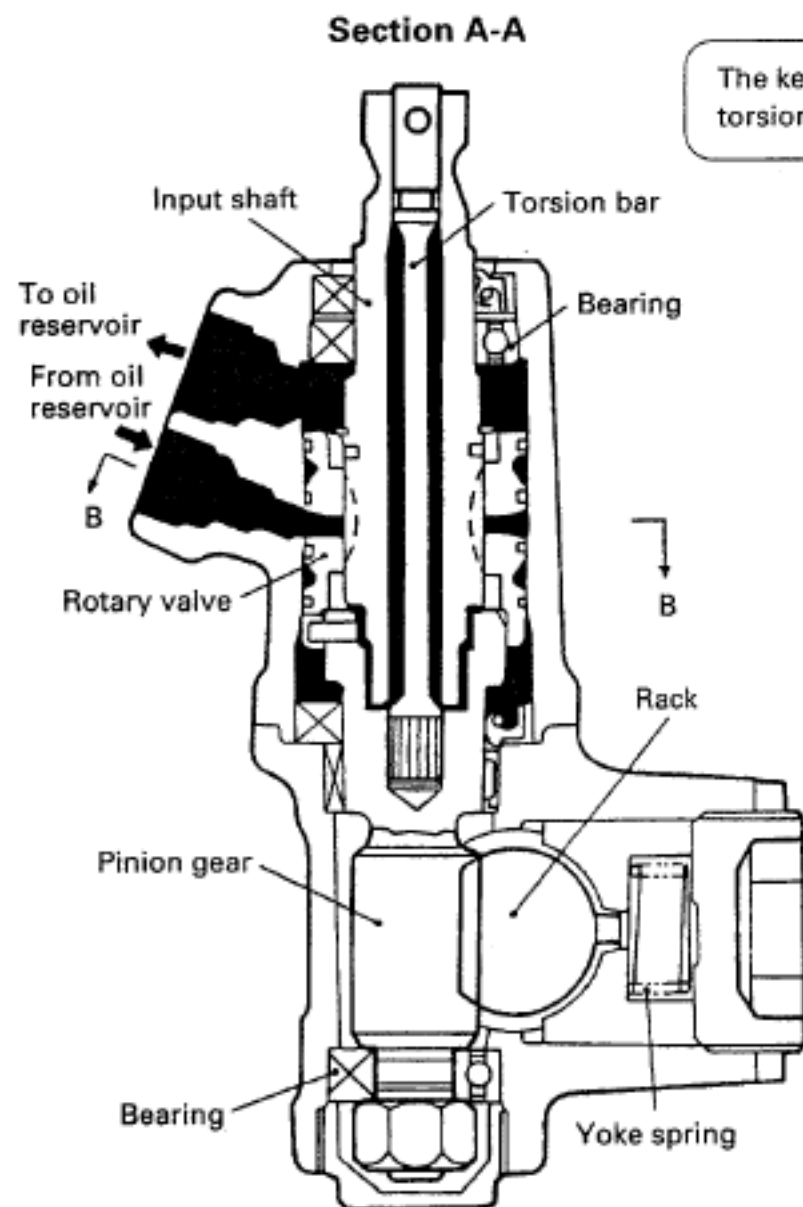


Fig. 4-19-T

The key point is how the torsion bar is twisted.

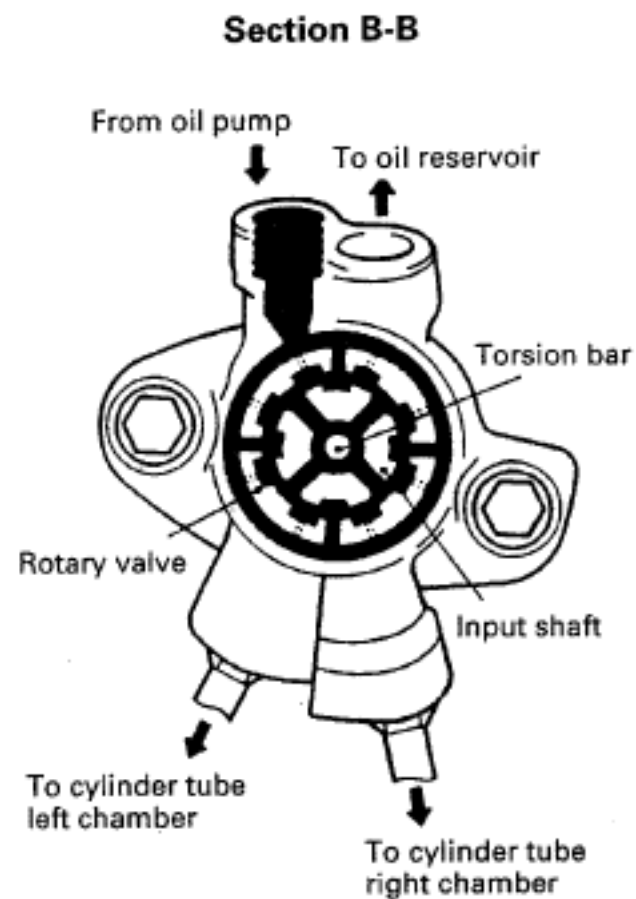


Fig. 4-20-T

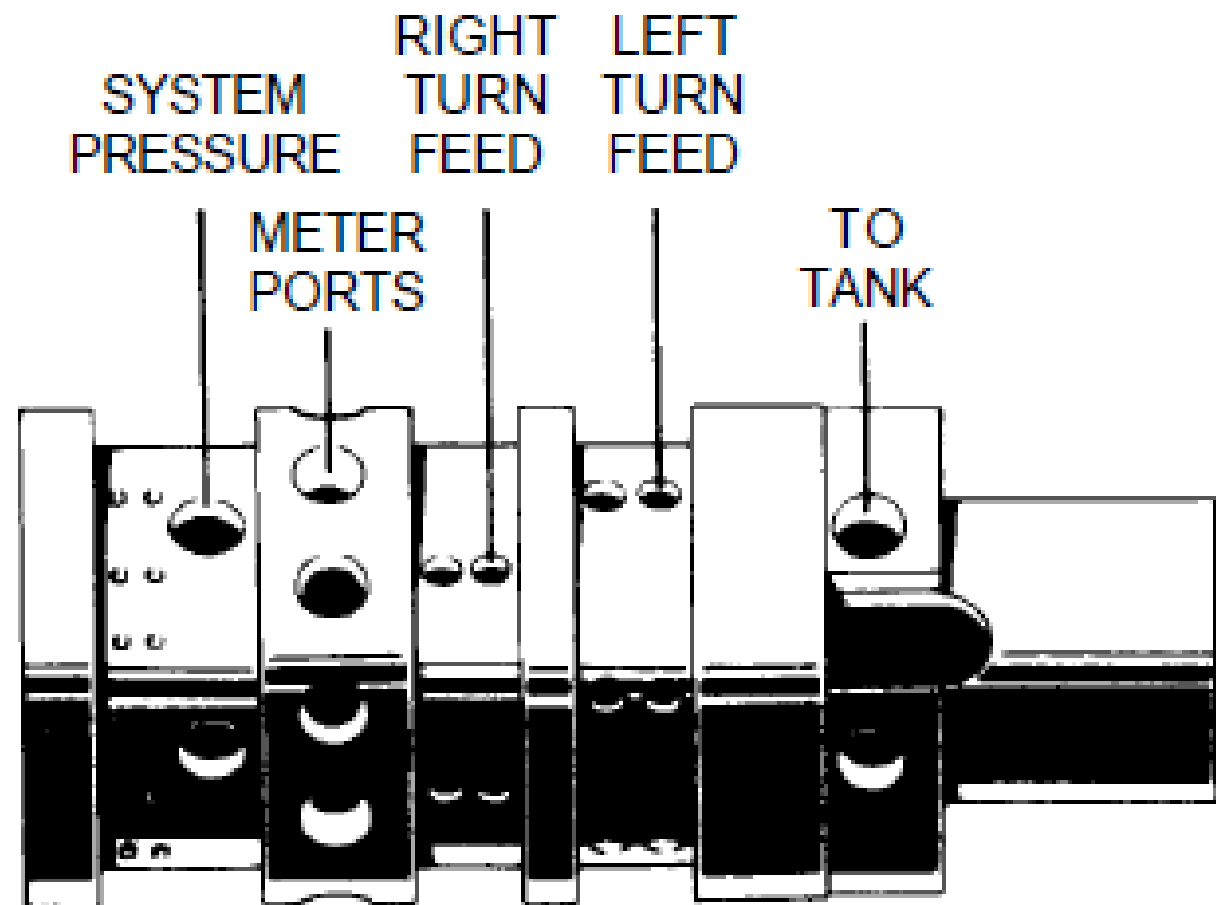


Fig. 3 - Porting of Spool and Sleeve

SM-283

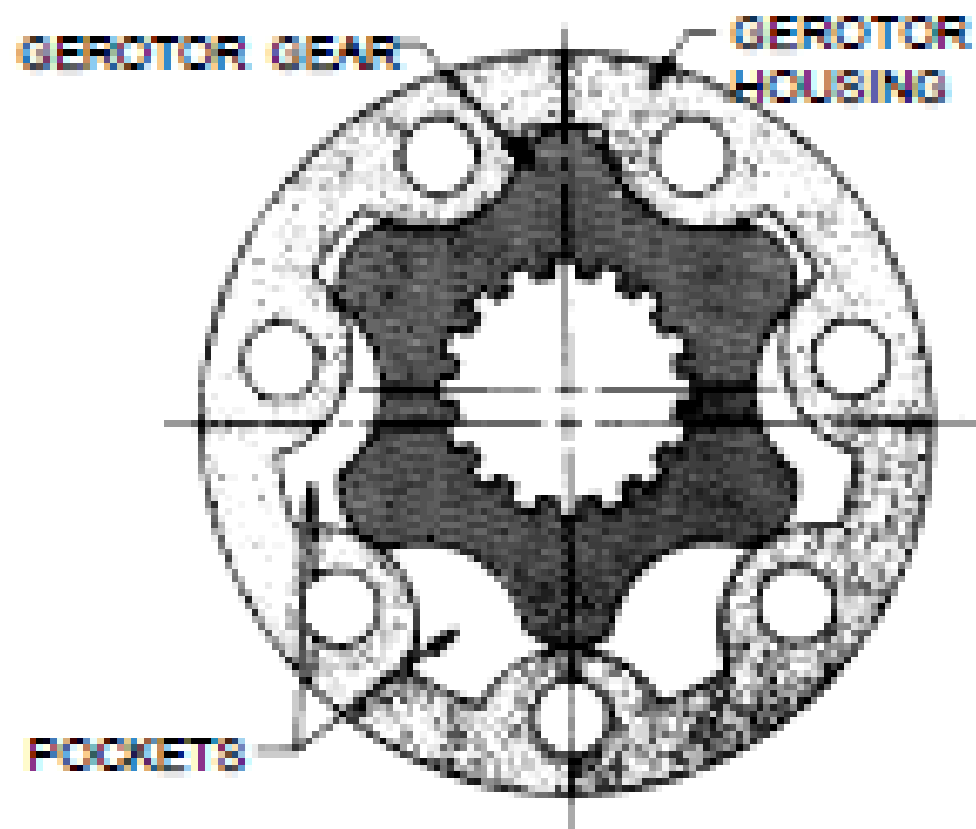
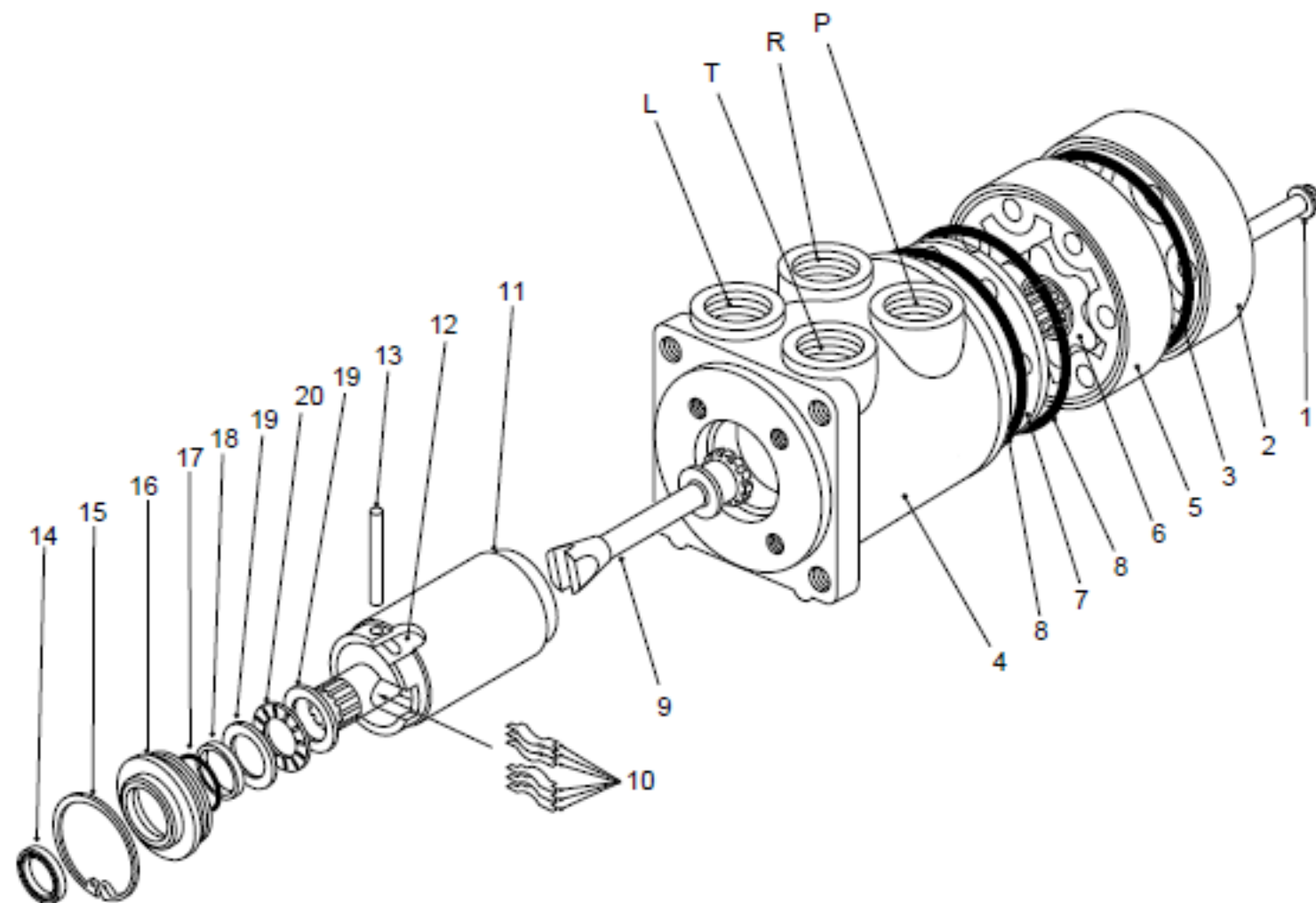


Fig. 2 - Gerotor Gear Set



- 1 - Cap Screw
- 2 - End Cap
- 3 - 'O' Ring
- 4 - Valve Housing
- 5 - Gerotor Housing

- 6 - Gerotor Gear
- 7 - Wear Plate
- 8 - 'O' Ring
- 9 - Driveshaft
- 10 - Centring Springs

- 11 - Sleeve
- 12 - Spool
- 13 - Centring Pin
- 14 - Dust Seal
- 15 - Retaining Ring

- 16 - Retainer
- 17 - 'O' Ring
- 18 - Seal
- 19 - Bearing Race
- 20 - Needle Bearing

Fig. 8 - Exploded View of Steering Valve

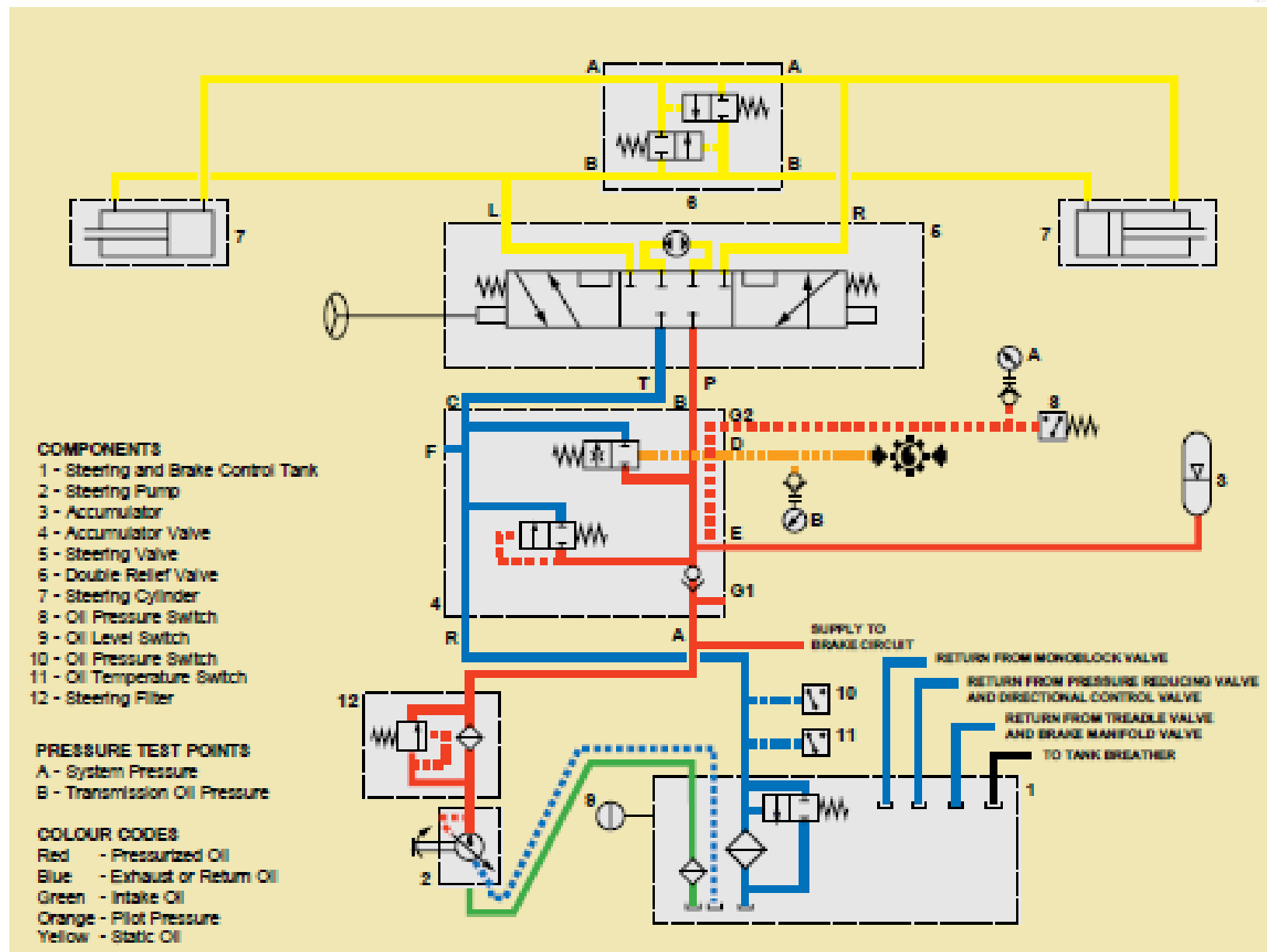


Fig. 3 - Steering System Schematic - Engine Running, Steering Valve Neutral

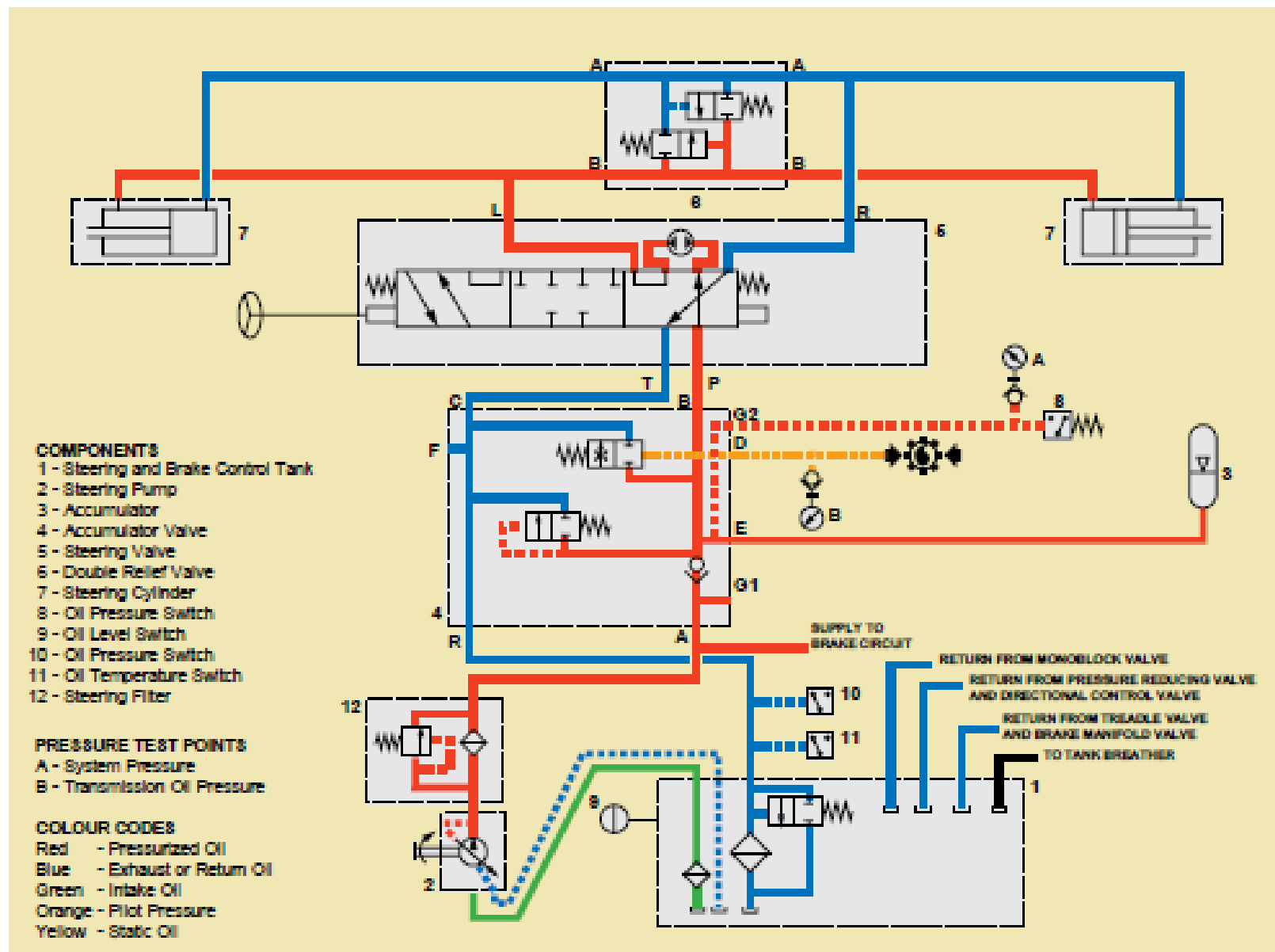
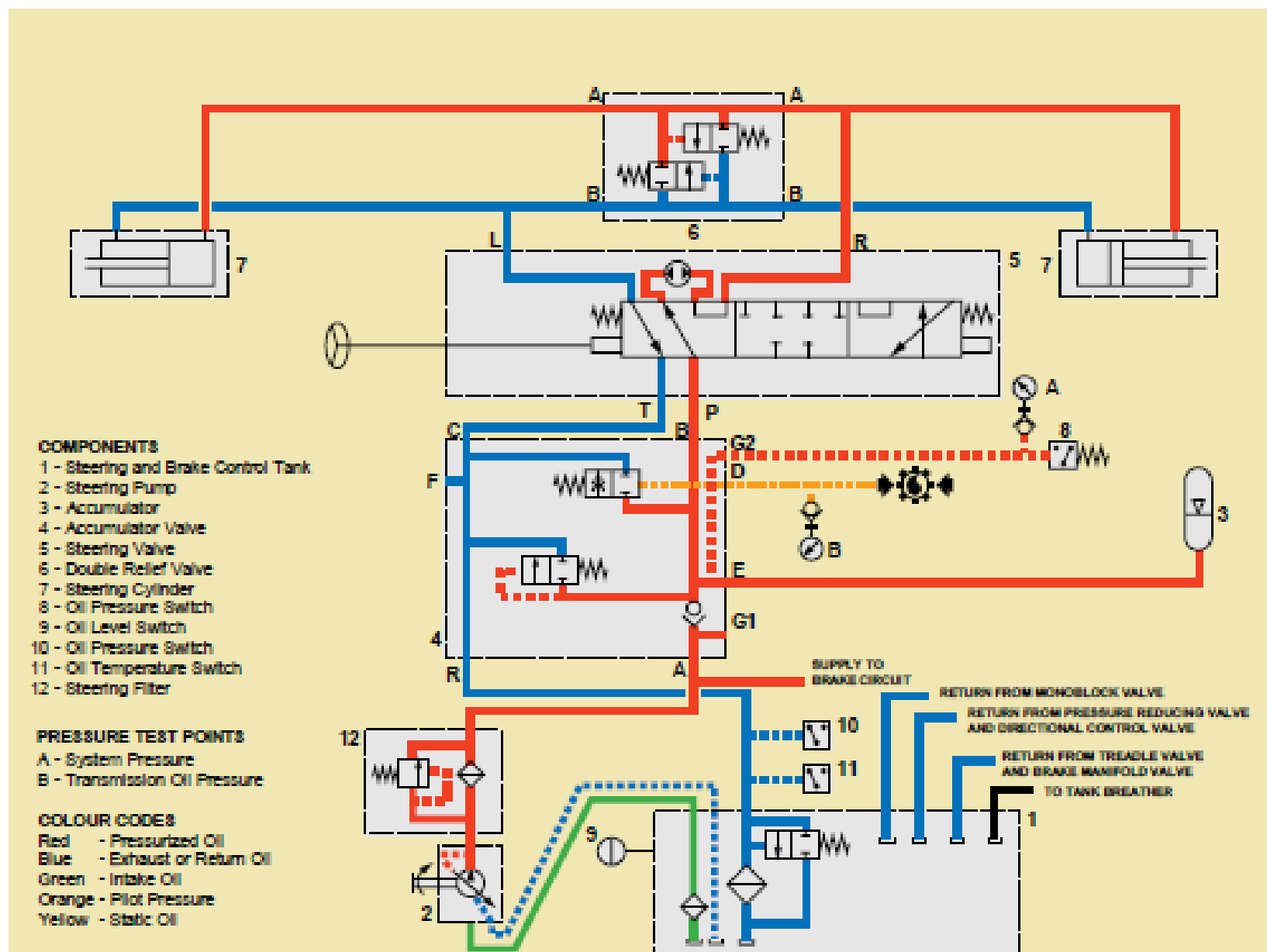


Fig. 4 - Steering System Schematic - Engine Running, Steering Valve Left Turn



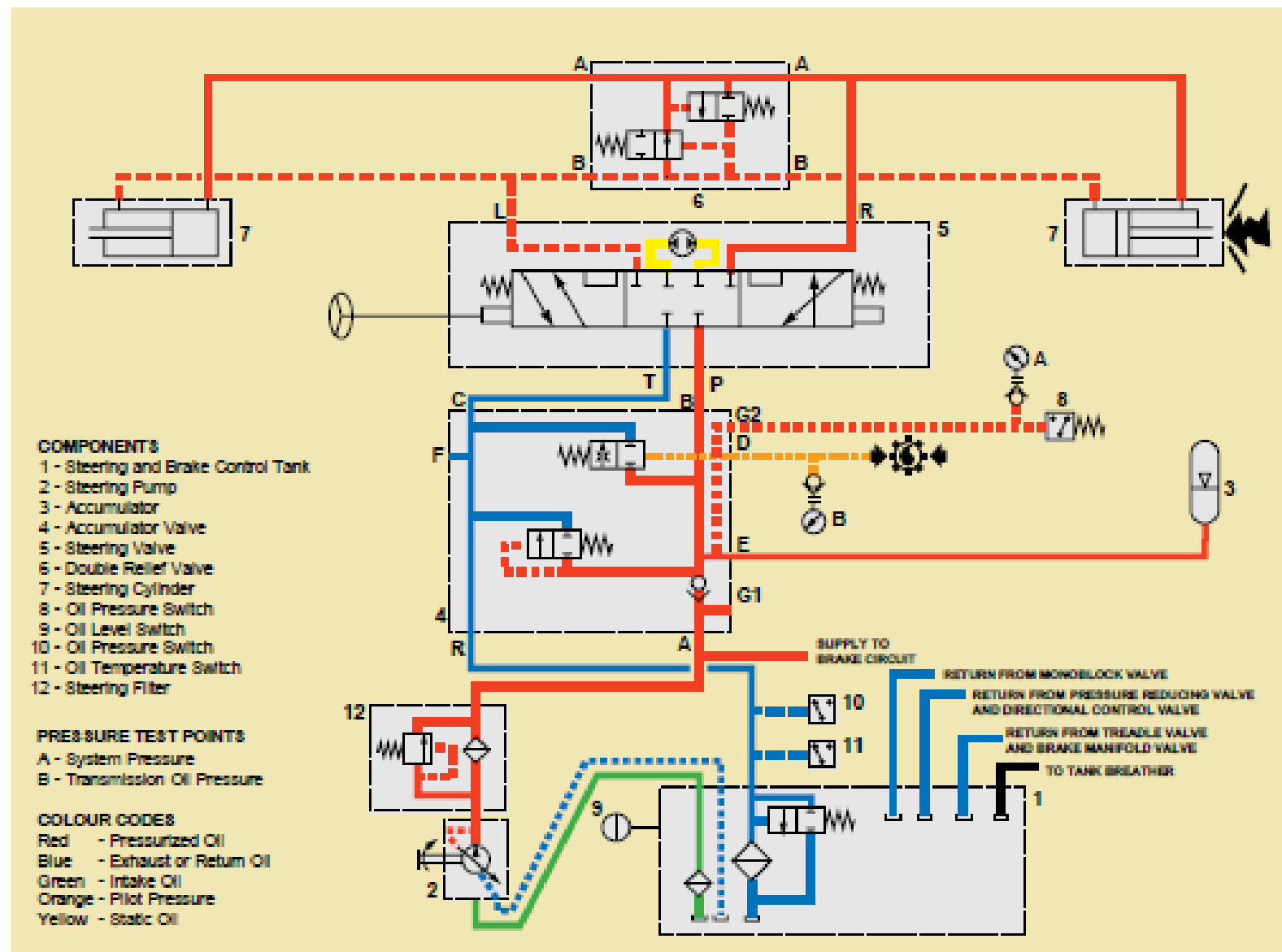


Fig. 6 - Steering System Schematic - Engine Running, Steering Cylinder Shock Load

