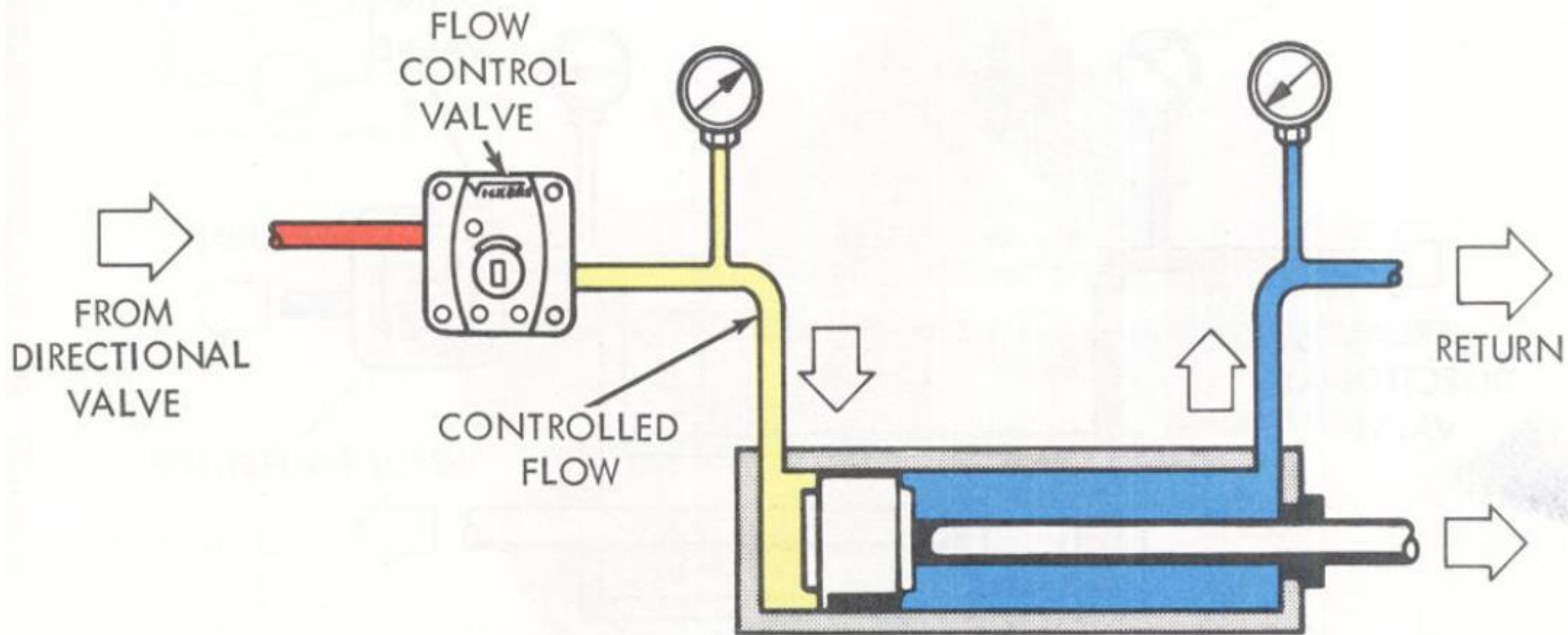
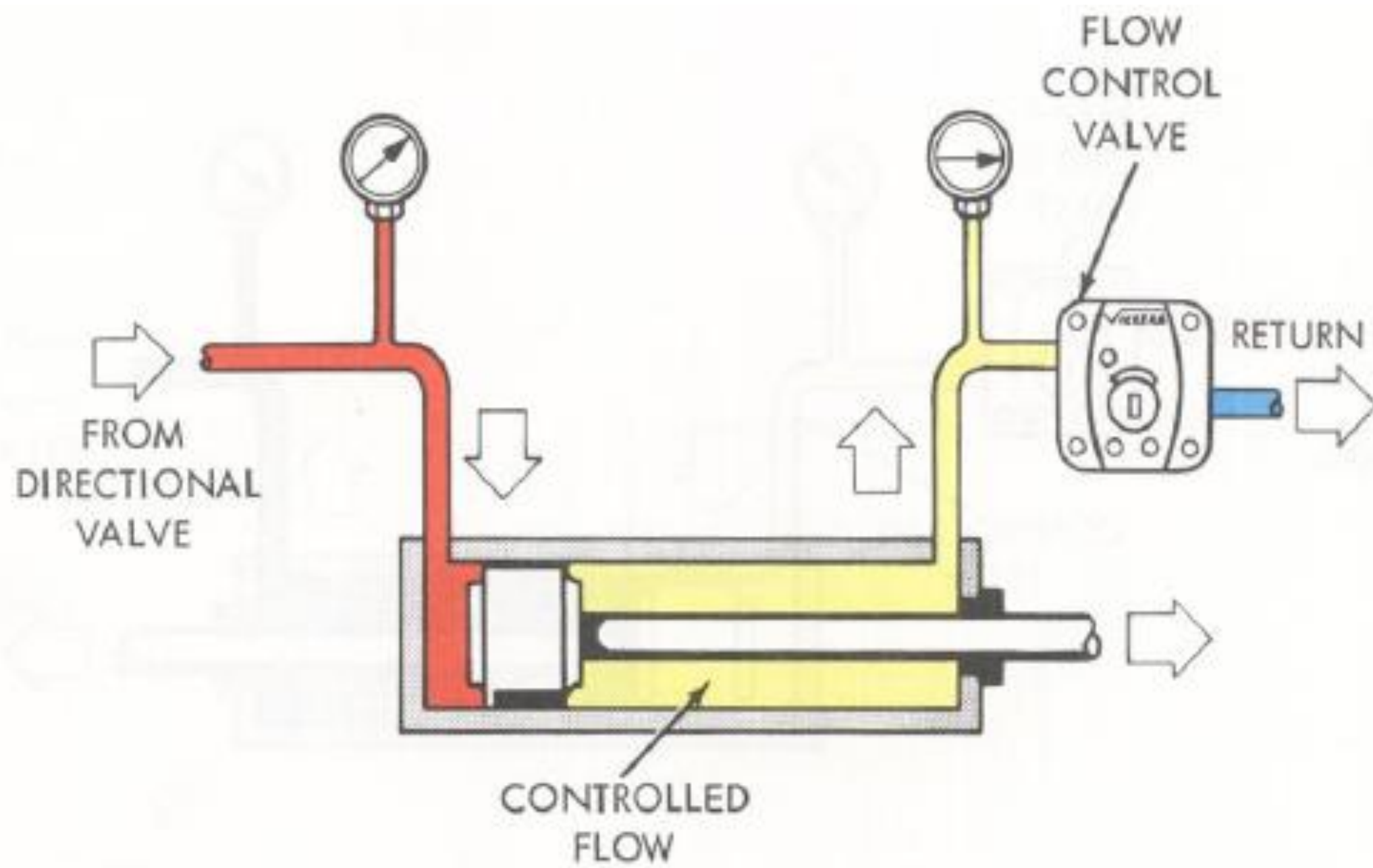
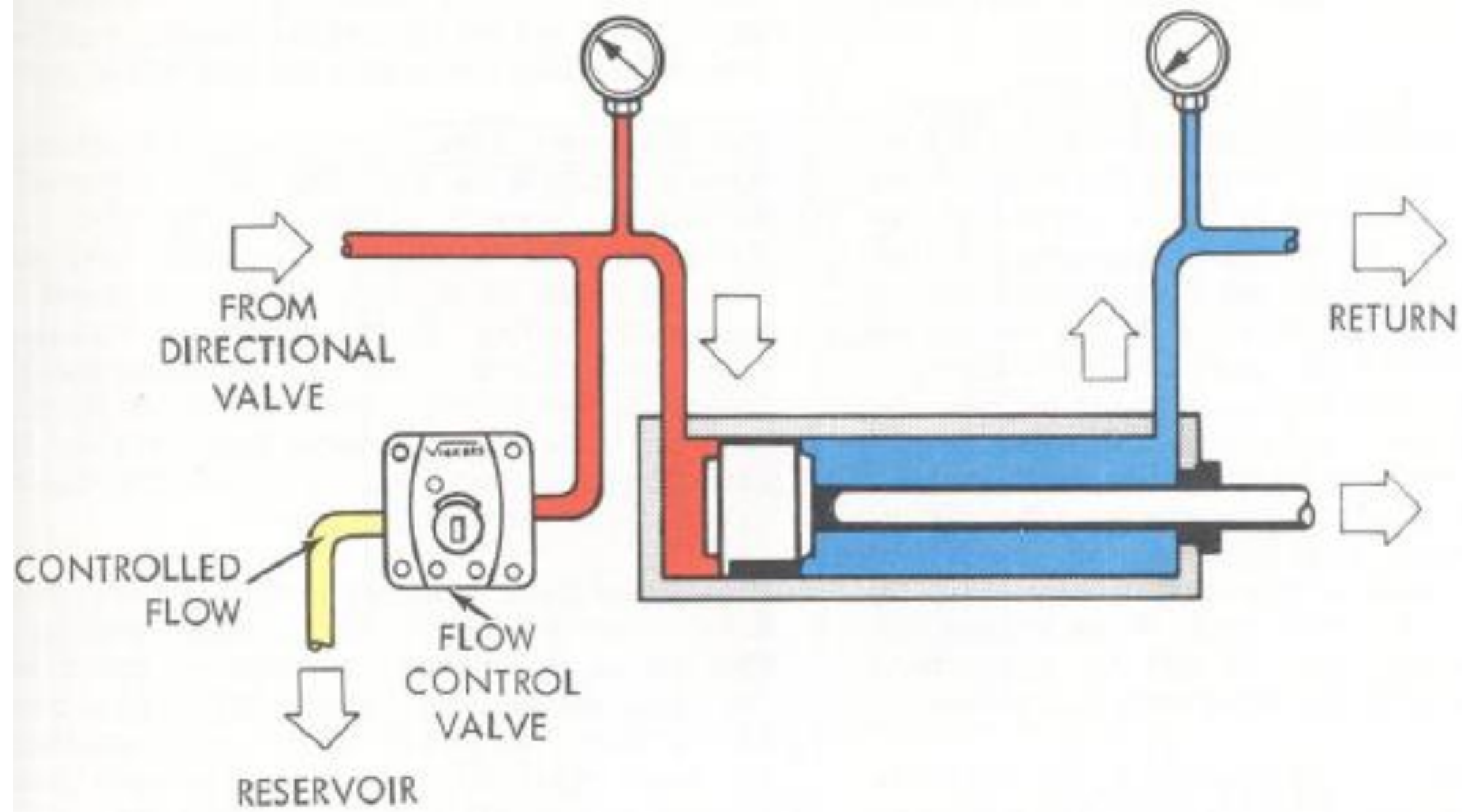


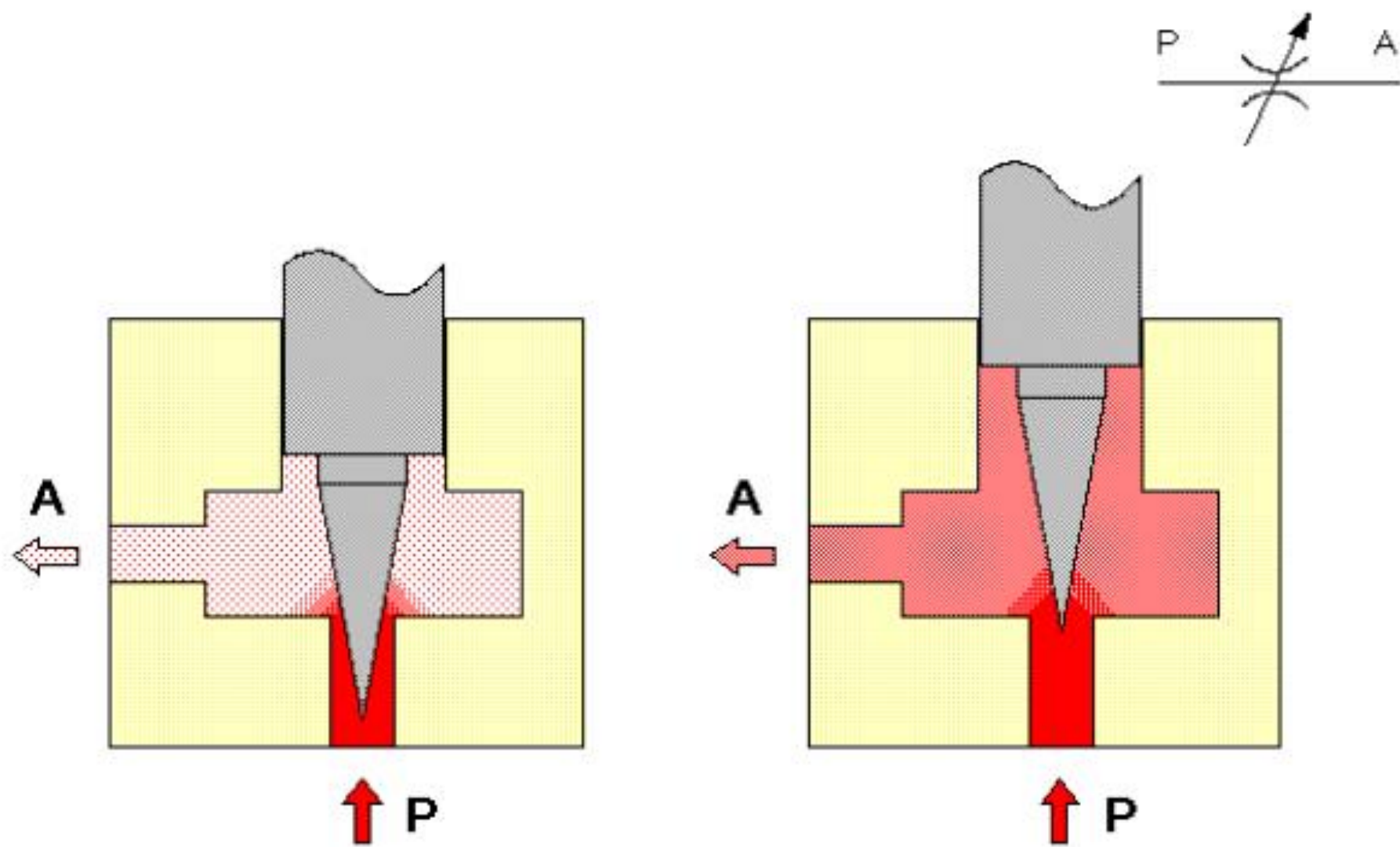
# Flow control valve

By:Dr reza moradi

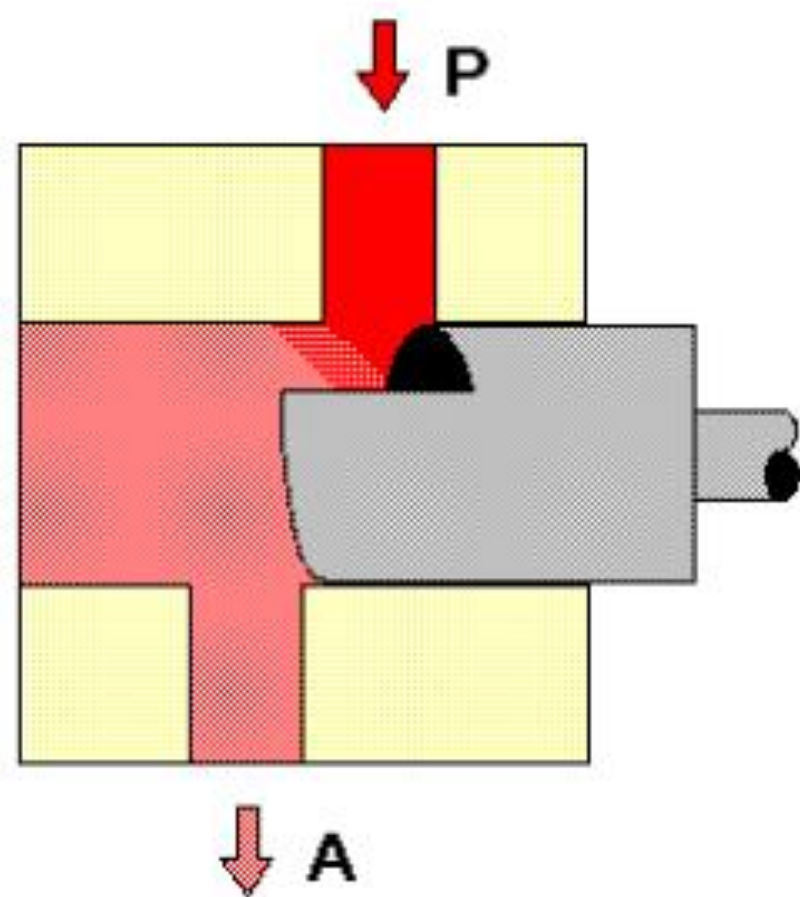
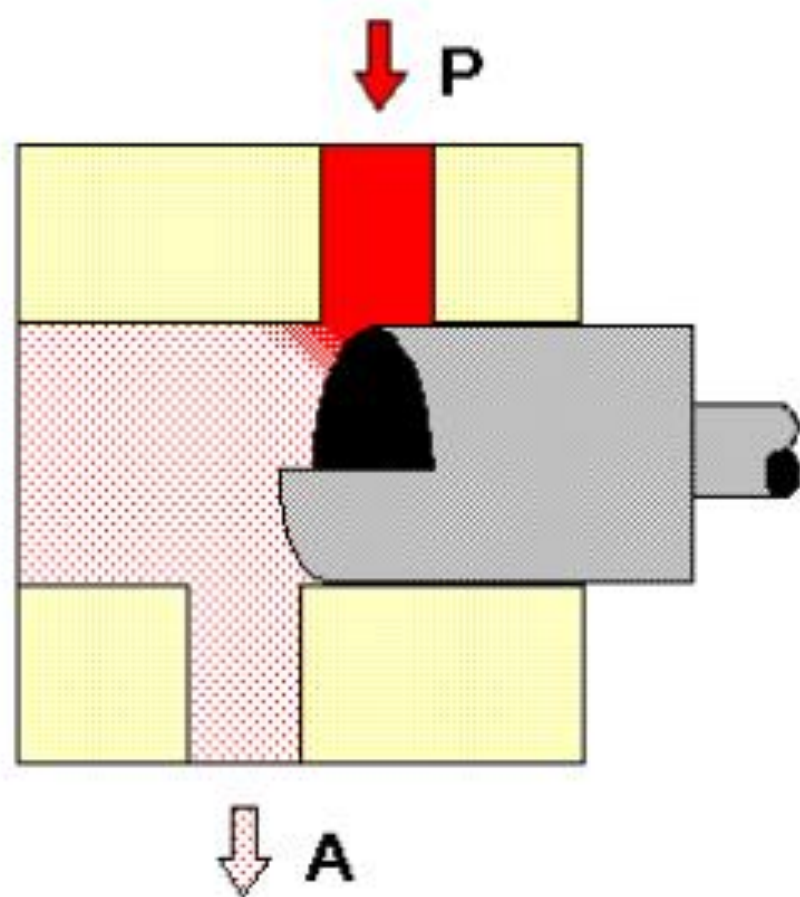






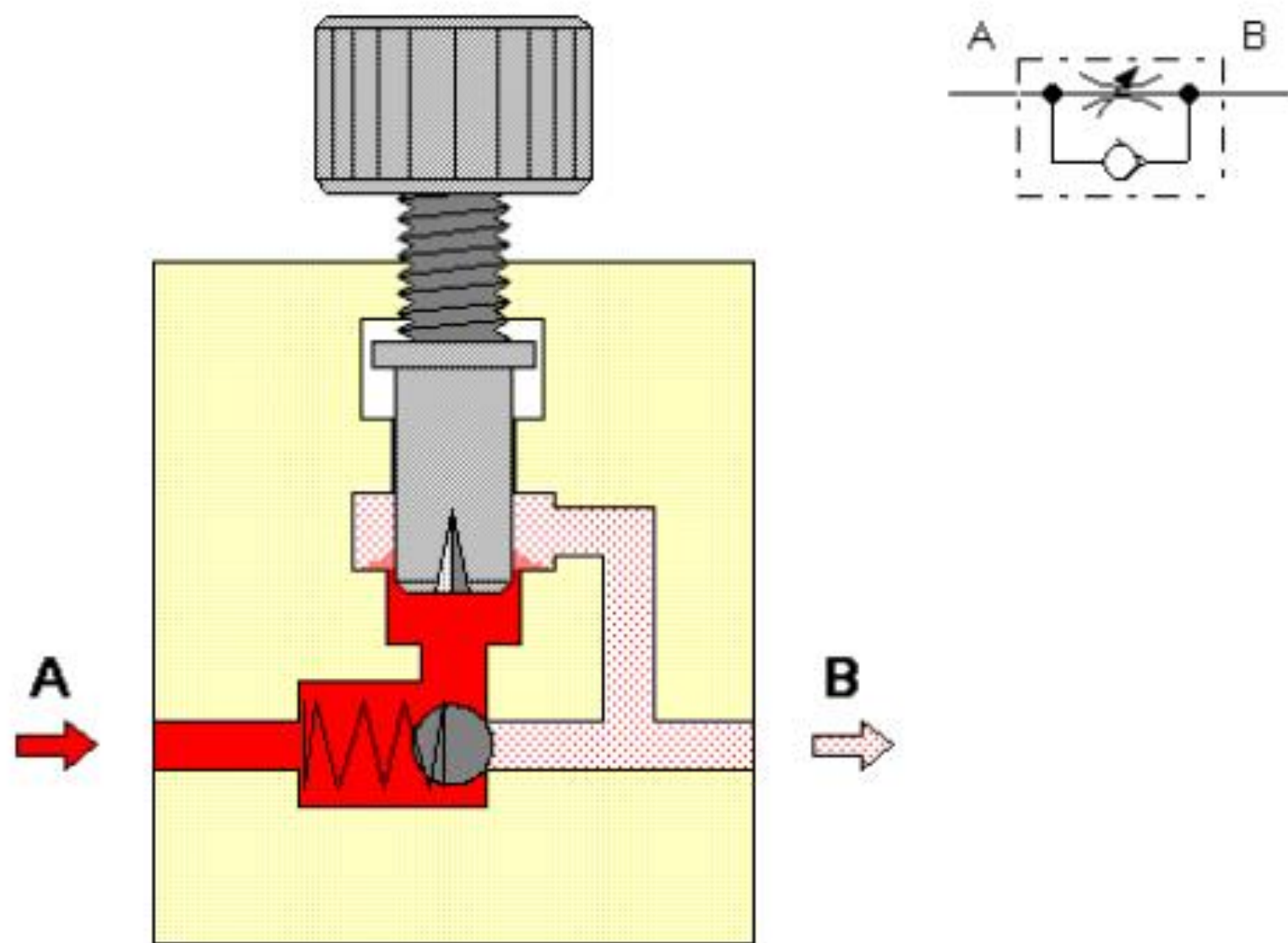


Needle restrictor

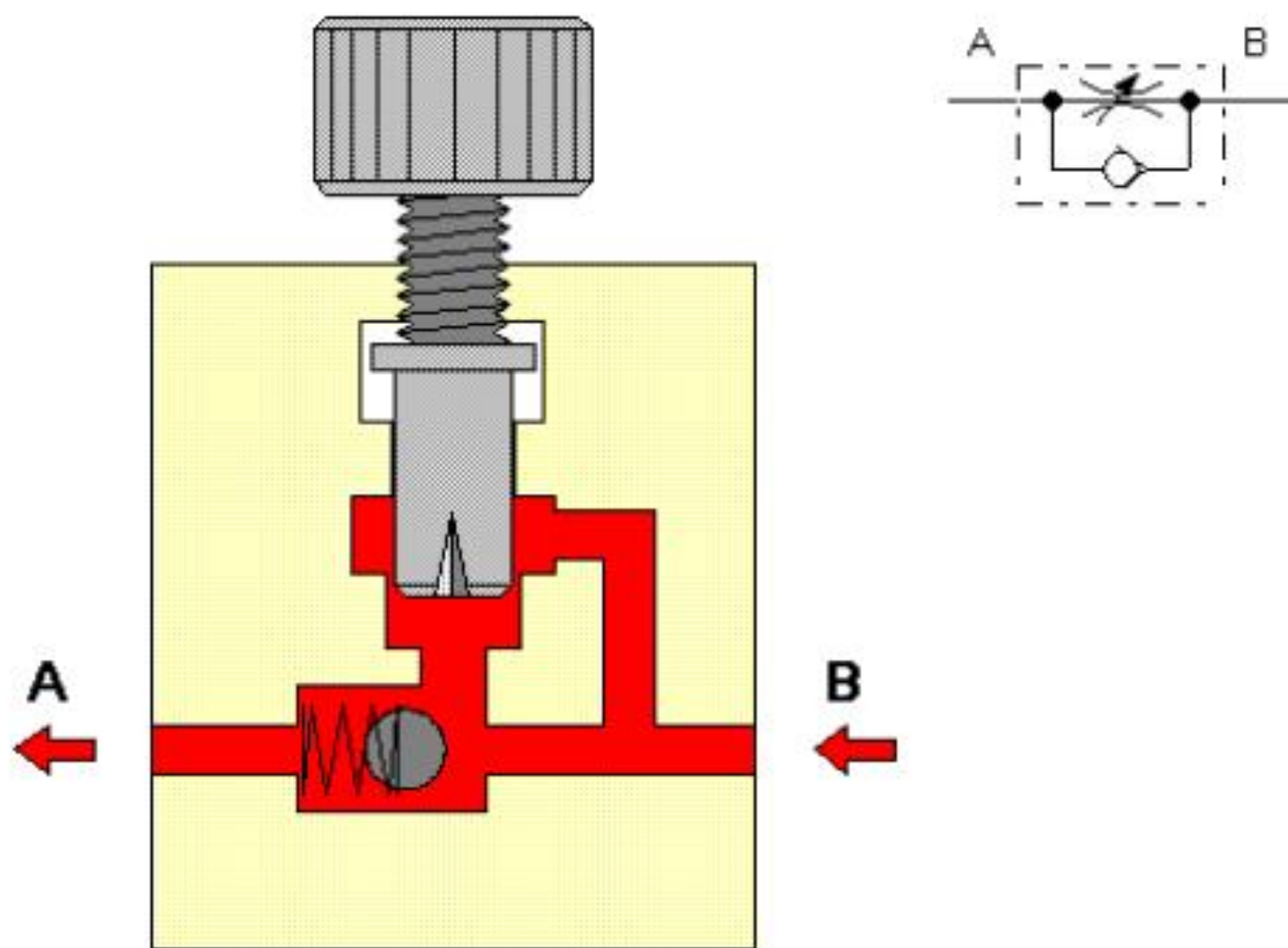


Gap restrictor with helix



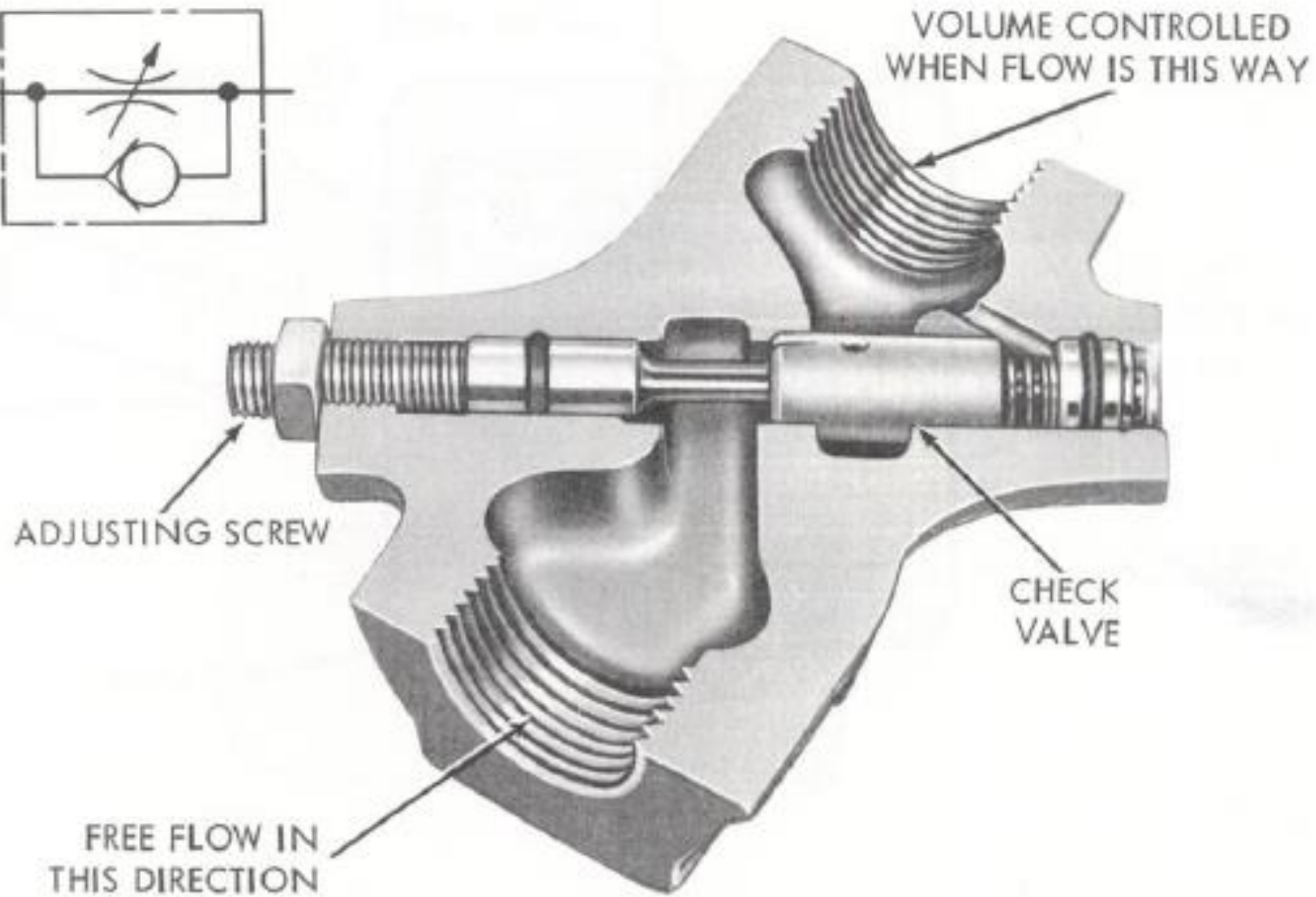
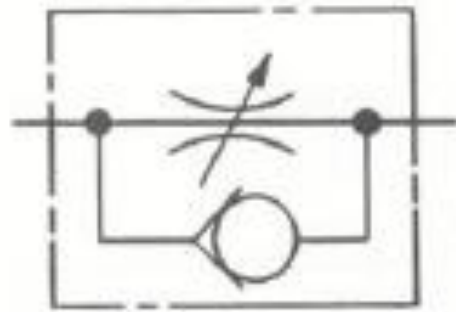


One-way flow control valve

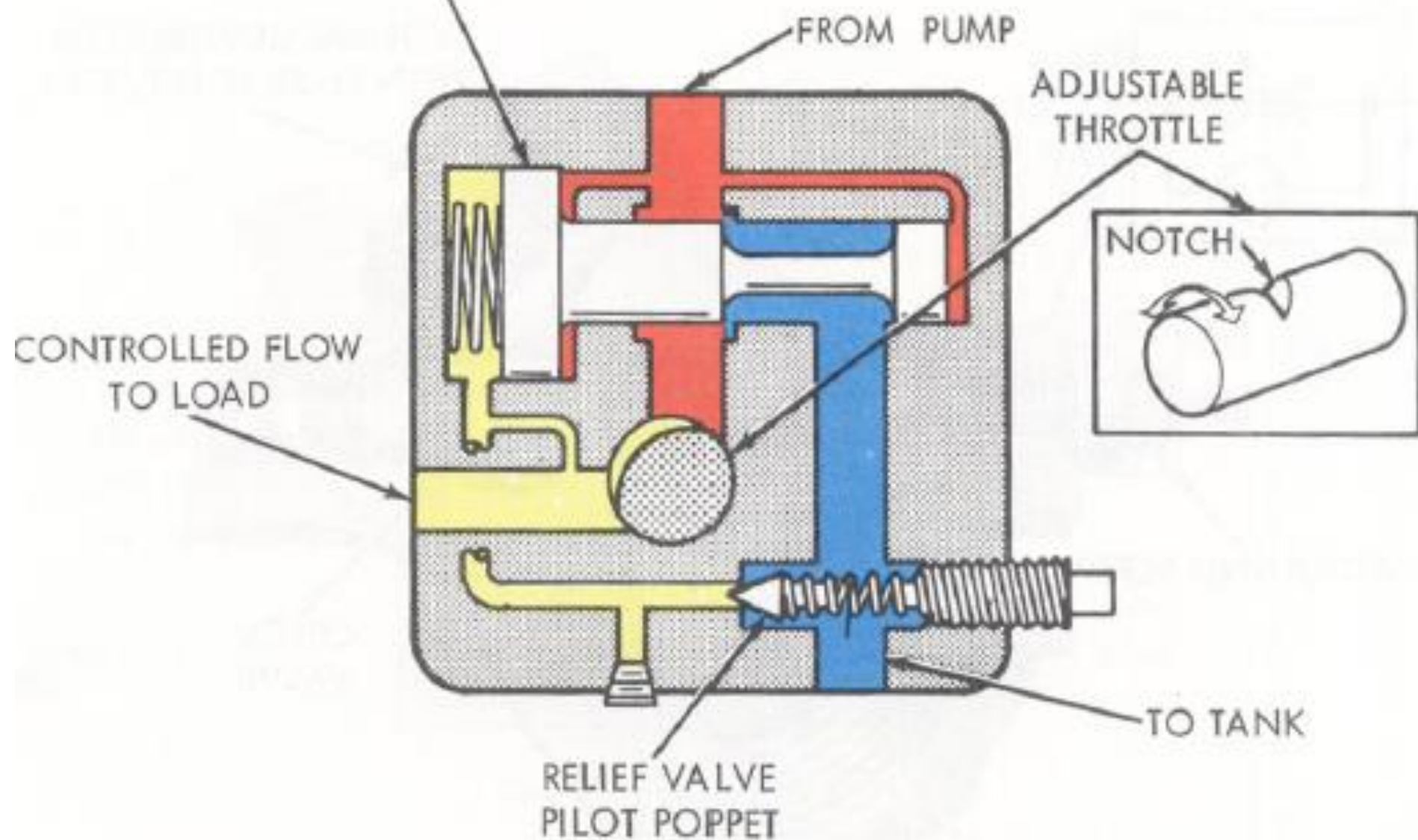


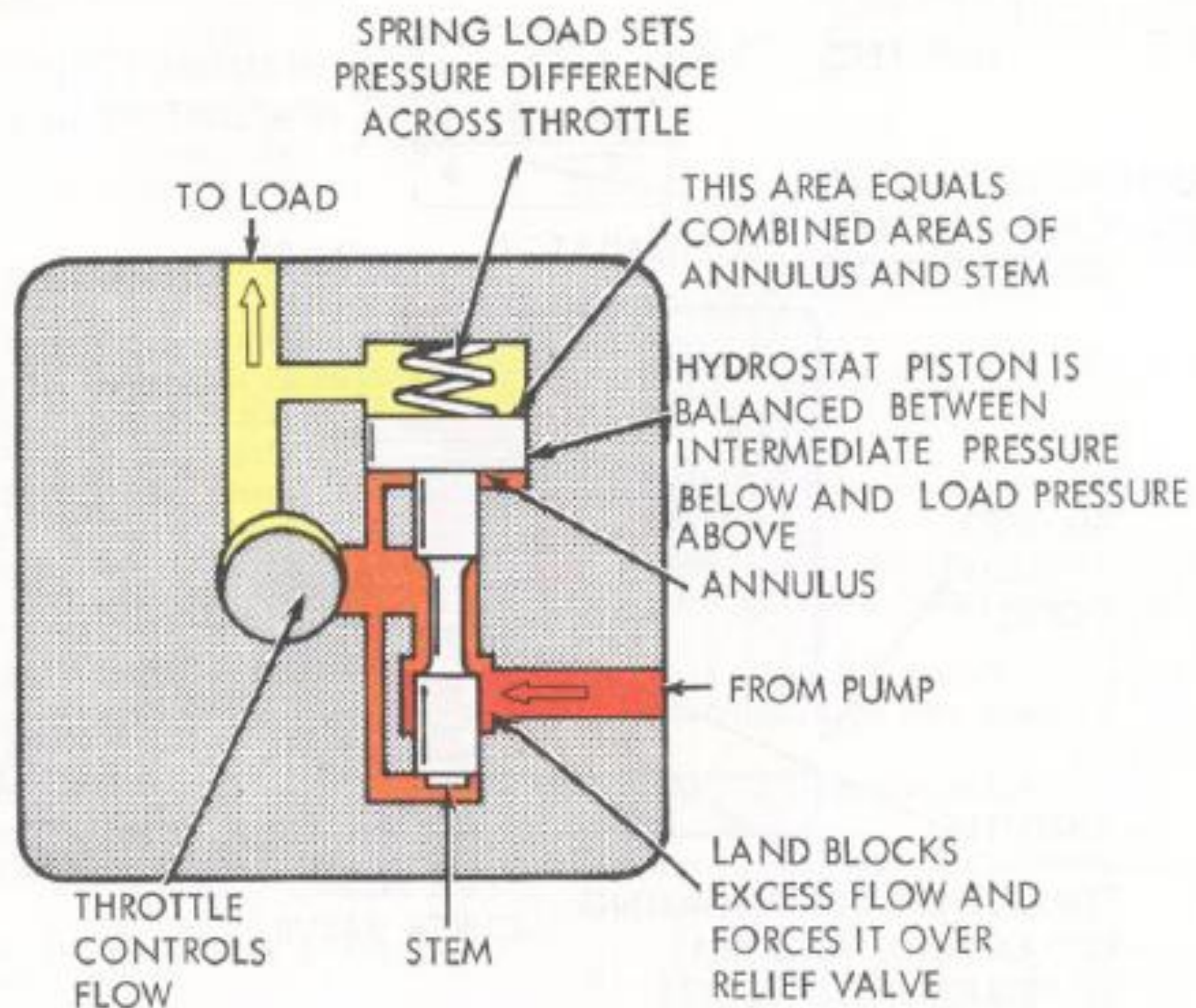
One-way flow control valve



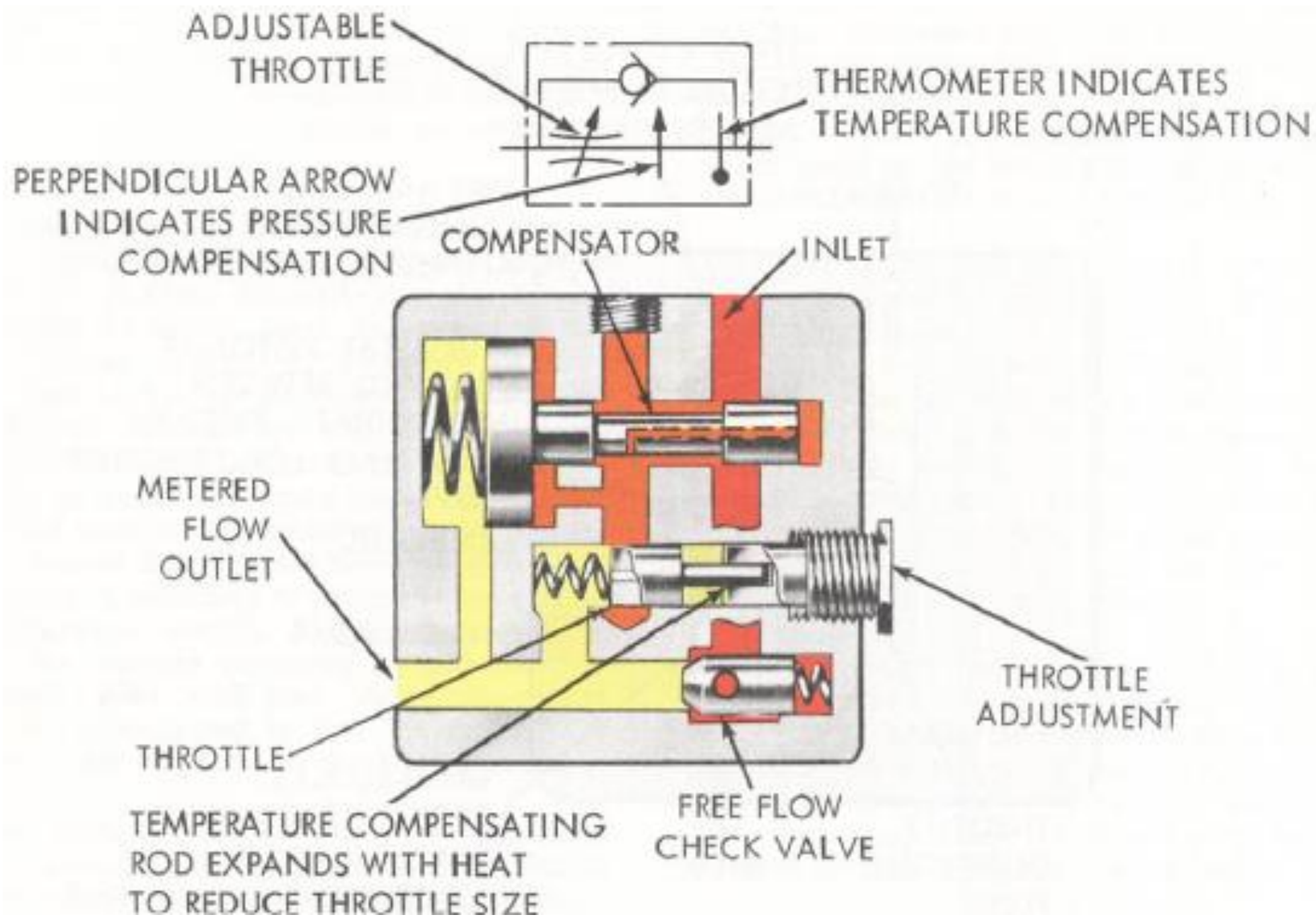


HYDROSTAT PISTON FUNCTIONS AS COMPENSATOR  
AND MAIN STAGE OF RELIEF VALVE

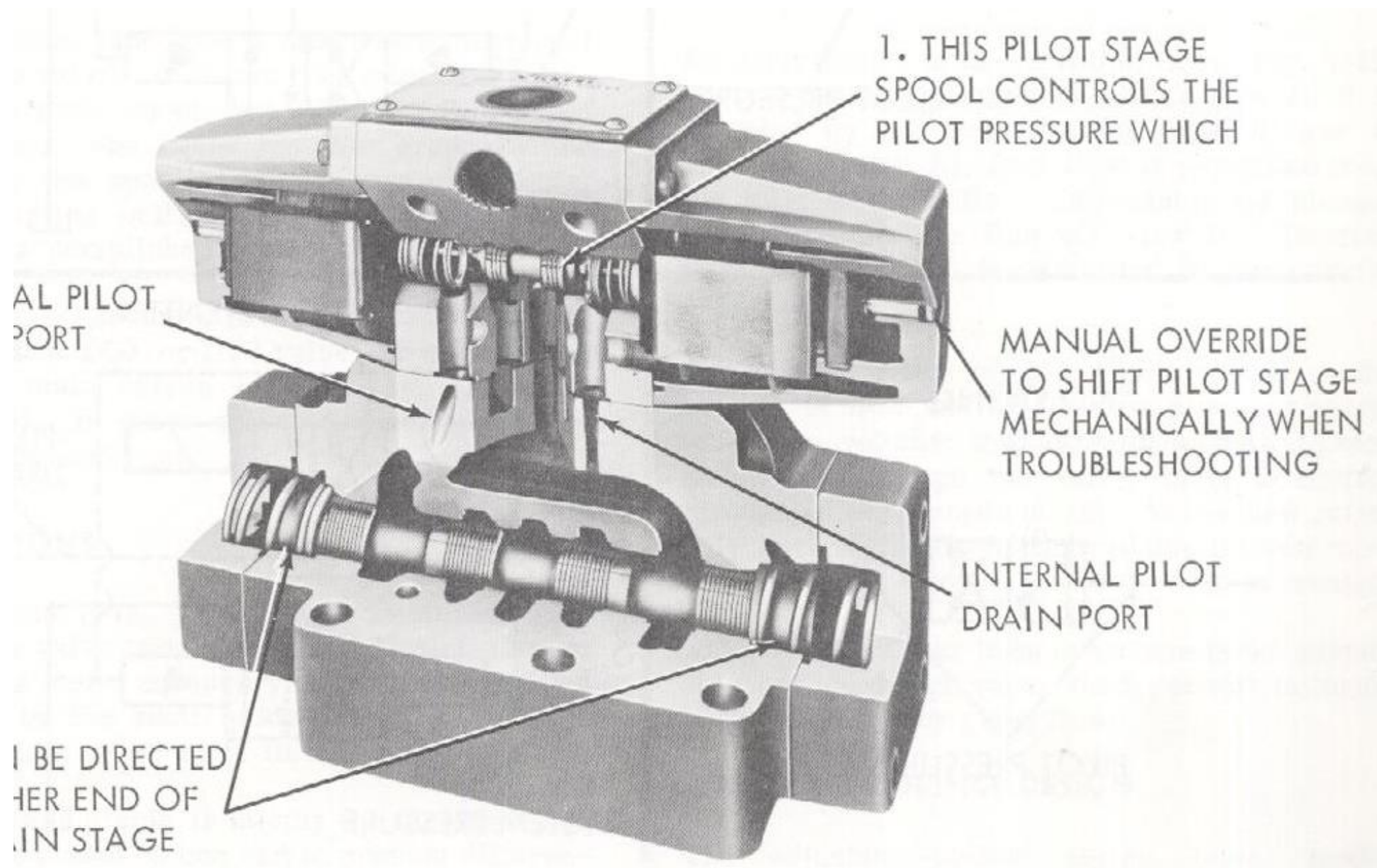




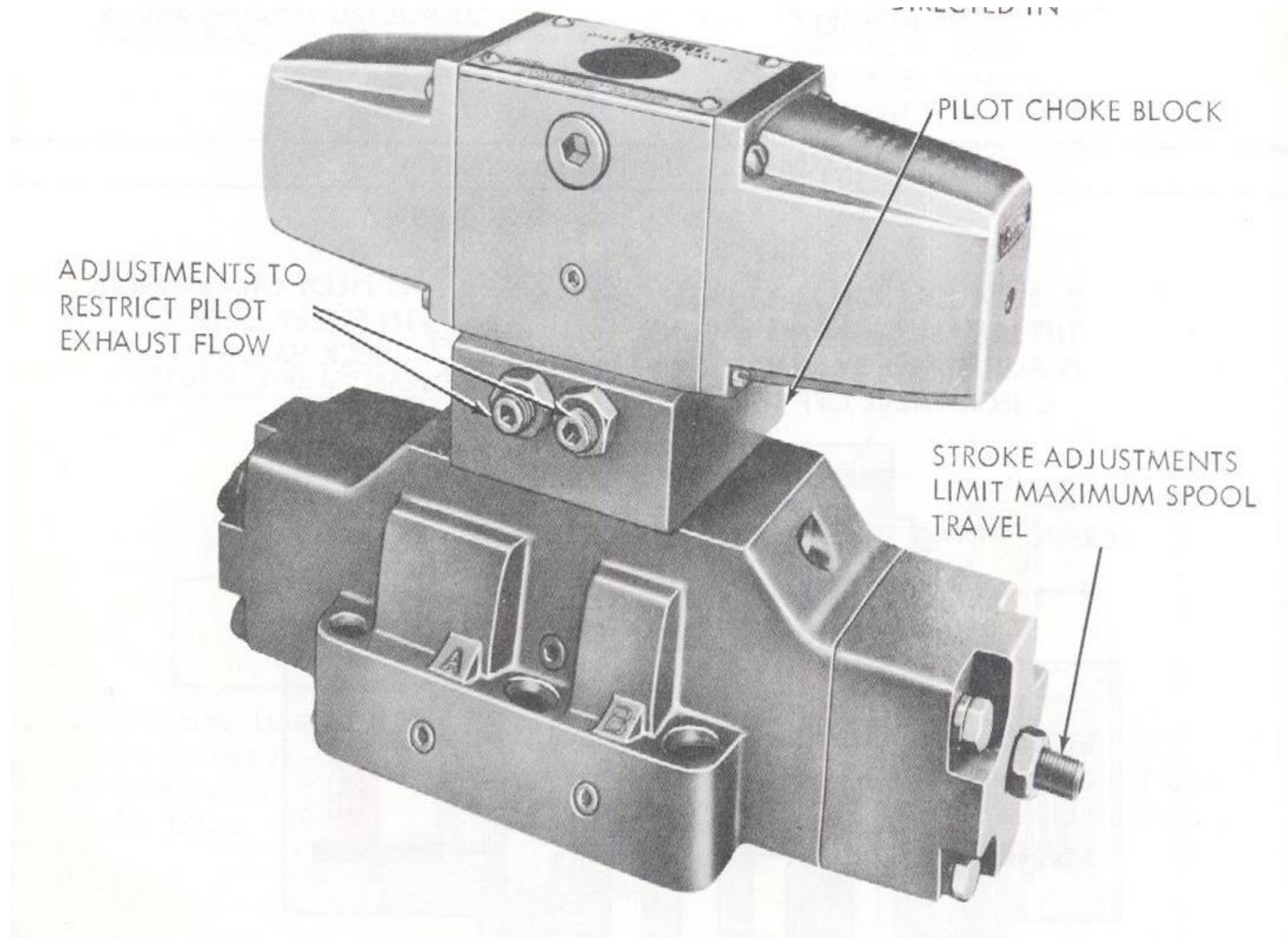


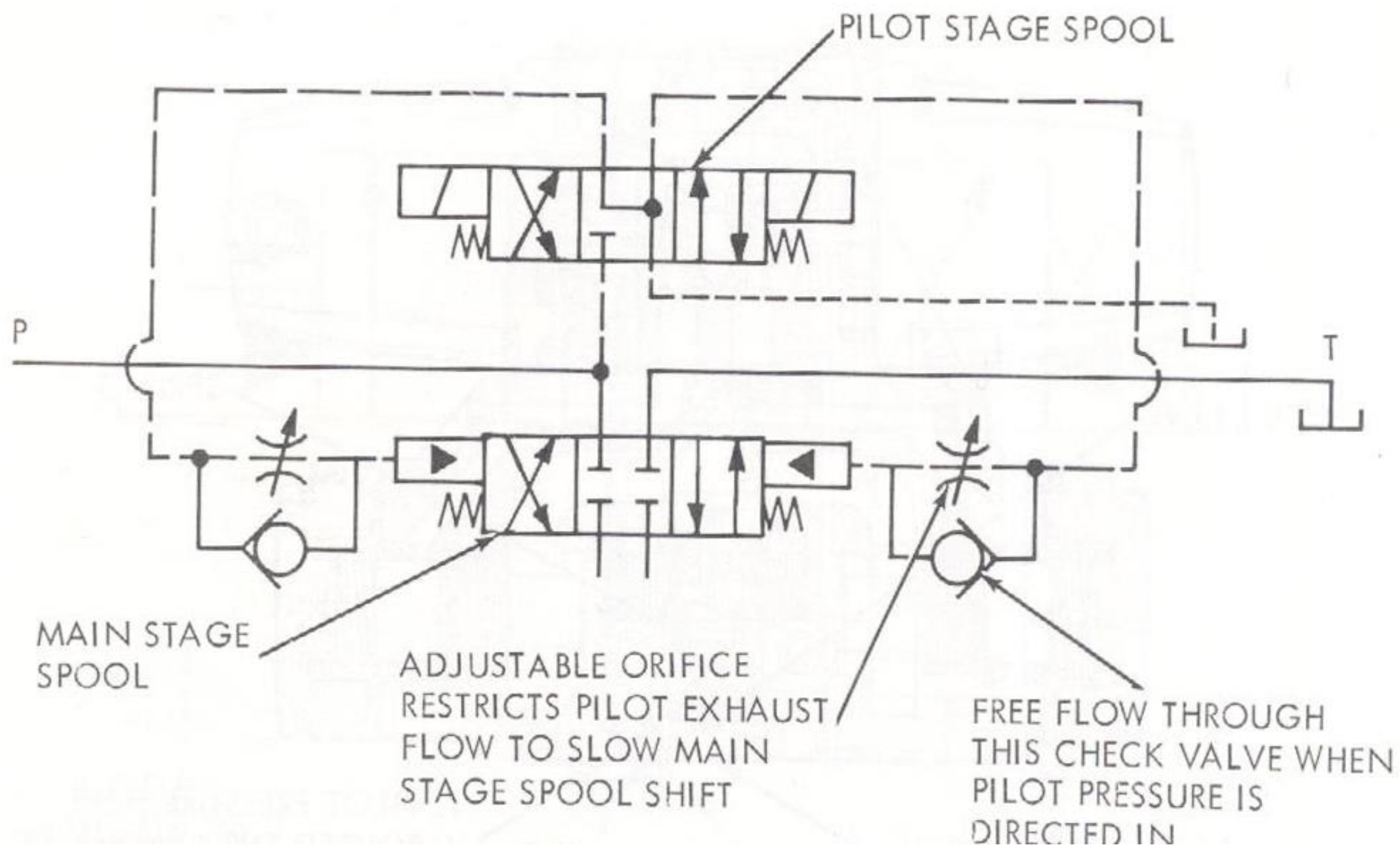












2. EXHAUST FLOW MUST PASS  
THRU SMALL OPENING WHICH  
IS ADJUSTABLE BY MOVING  
CHECK VALVE OFF SEAT

1. PILOT OIL FLOWS  
IN FREELY OVER  
CHECK VALVE

ADJUSTING  
SCREW

