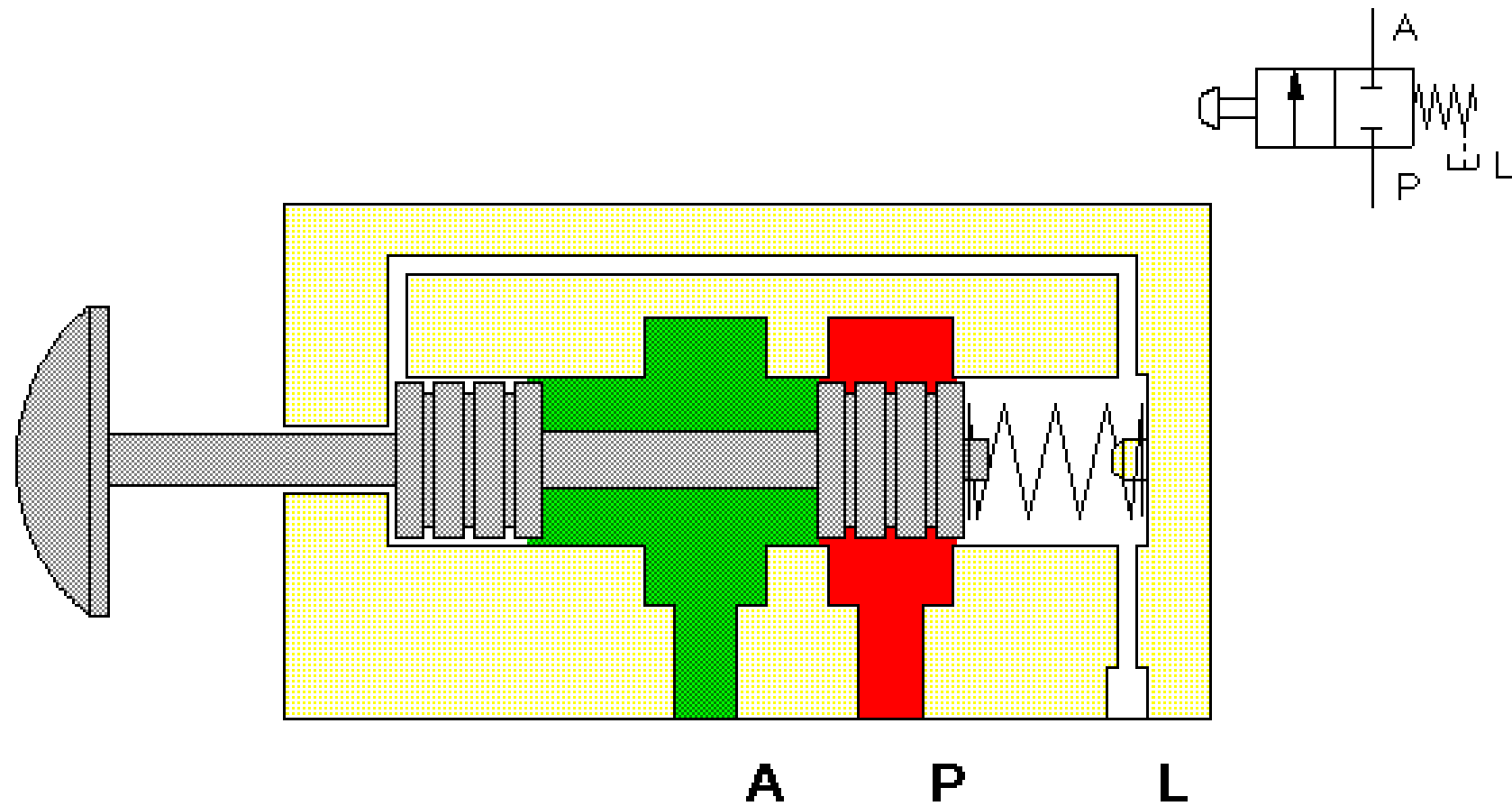
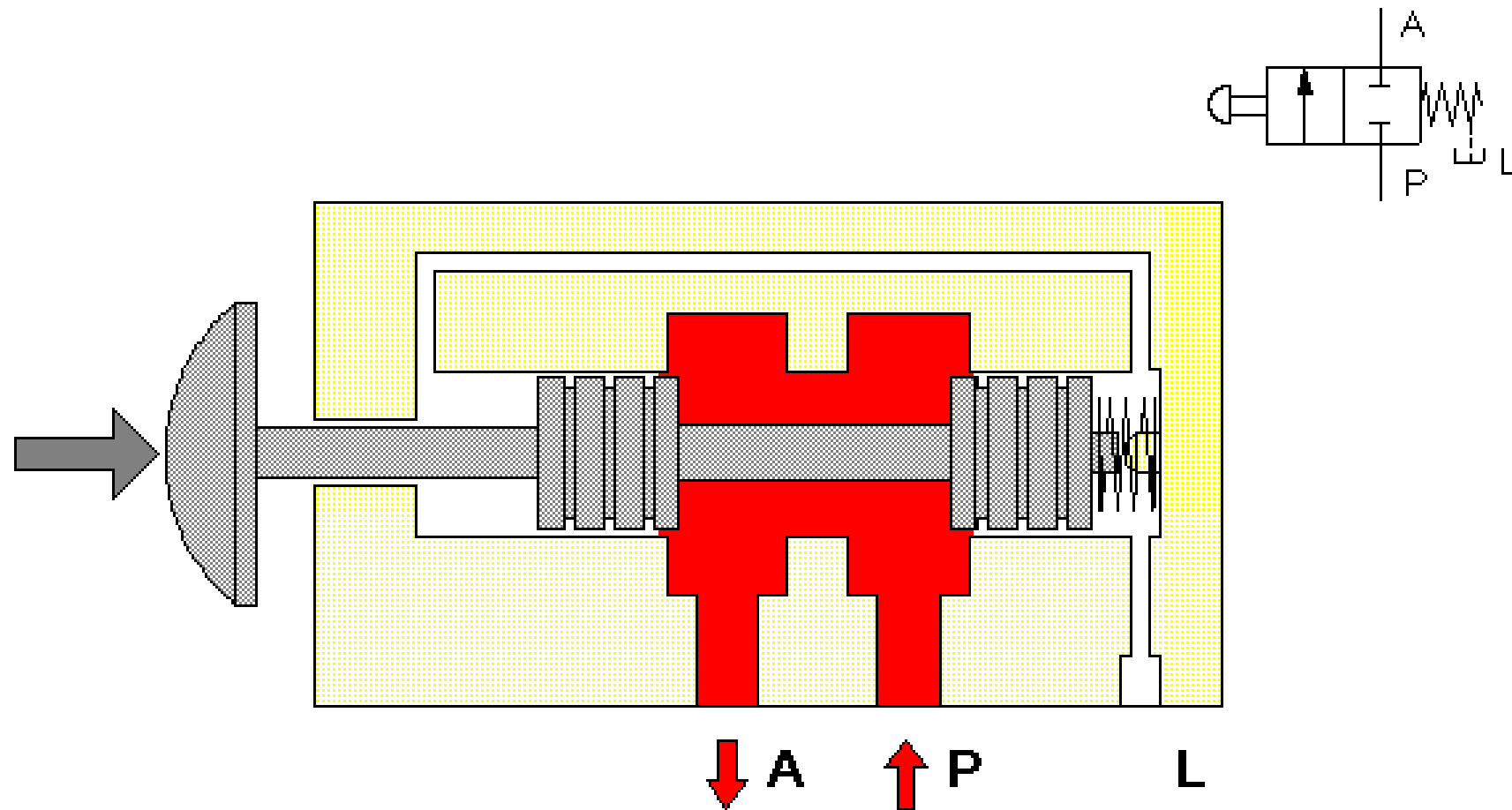


Directional valve

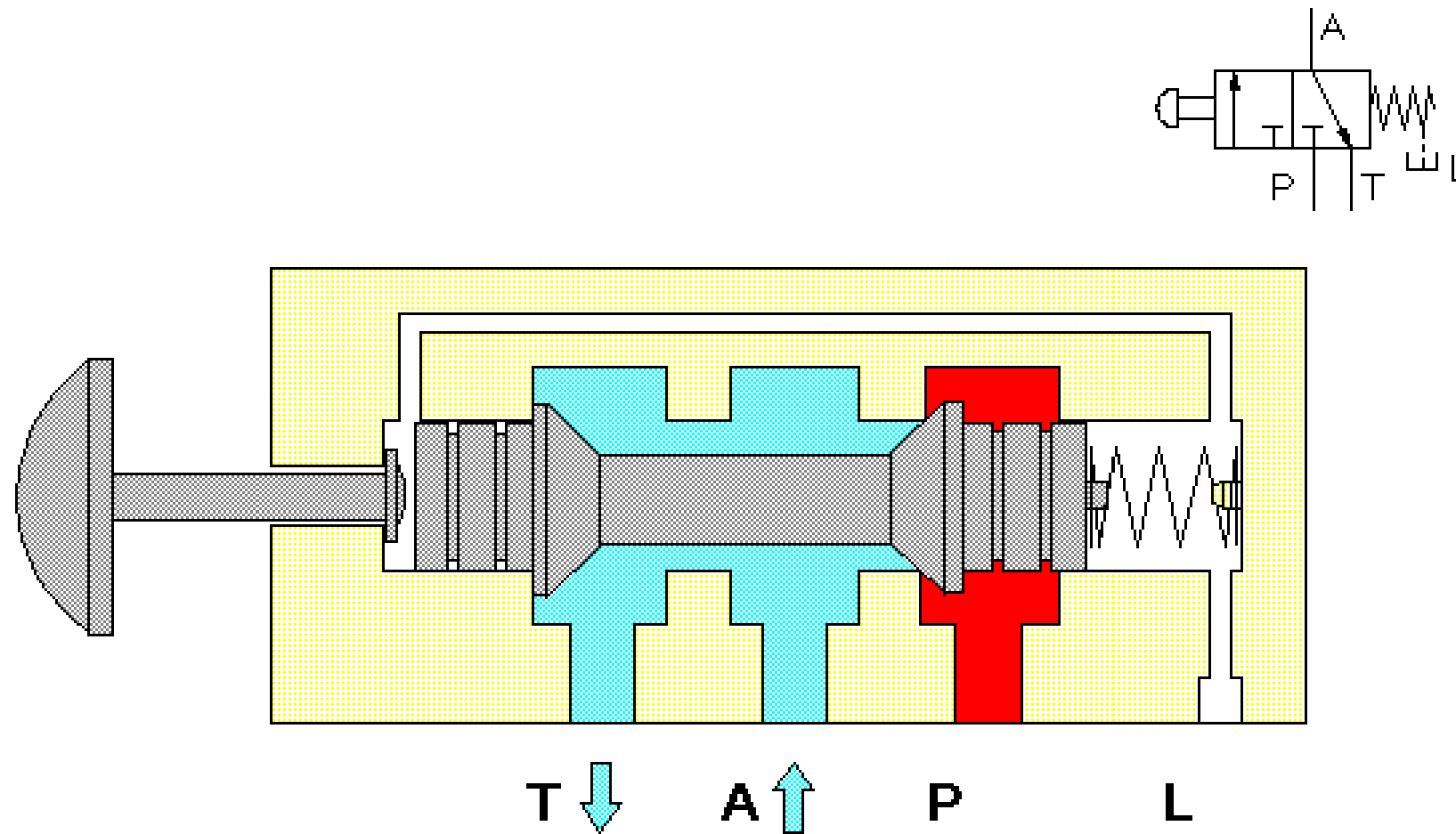
By : Dr Reza moradi



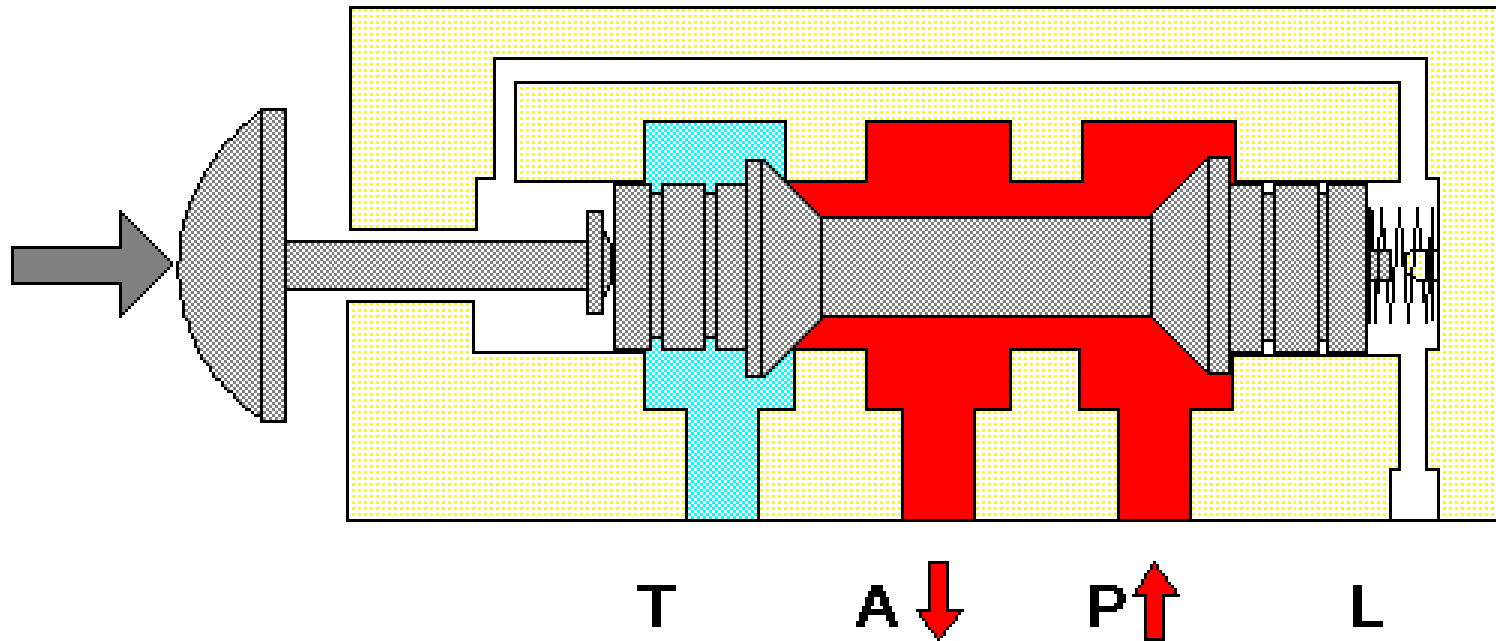
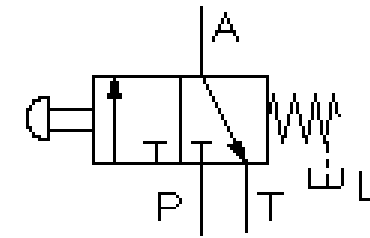
2/2 - way valve



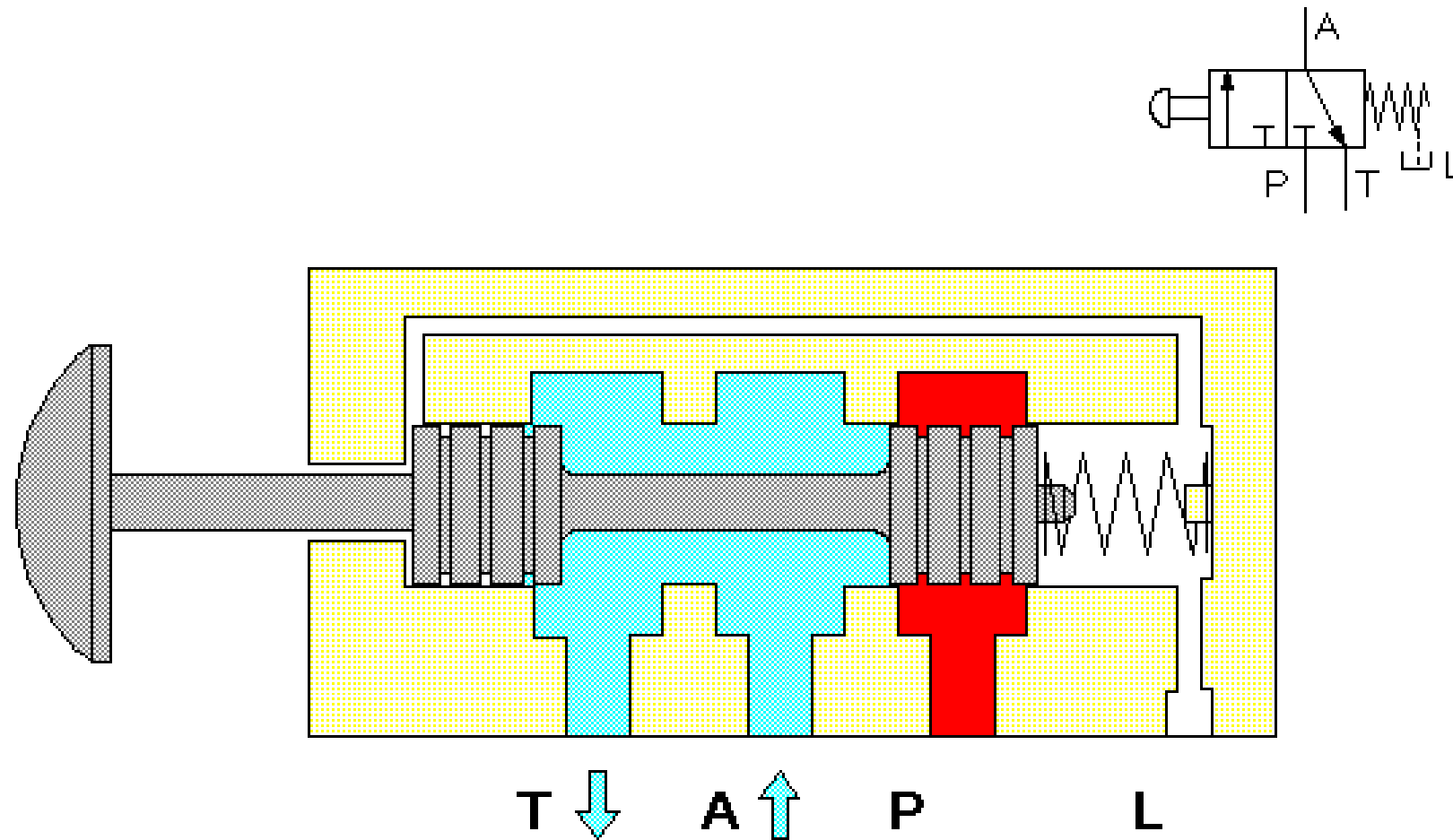
2/2 - way valve



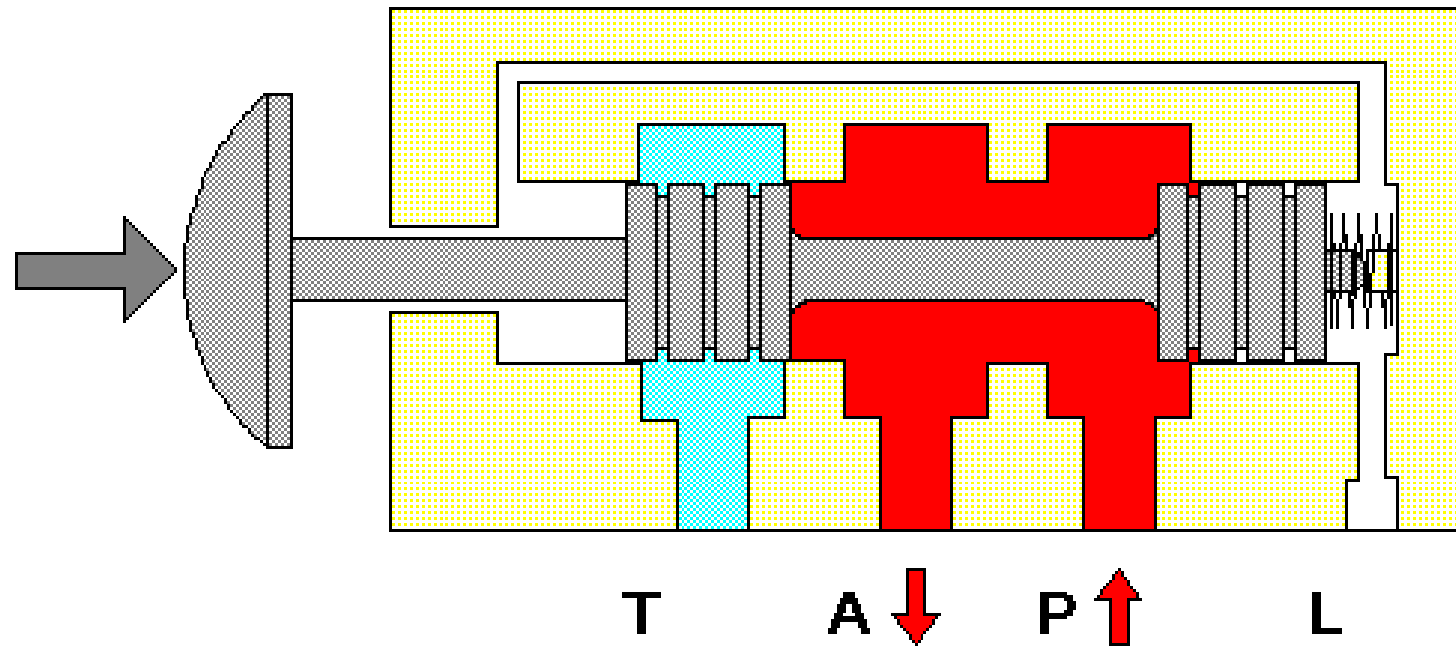
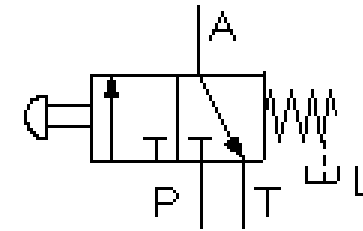
3/2 - way valve (poppet principle)



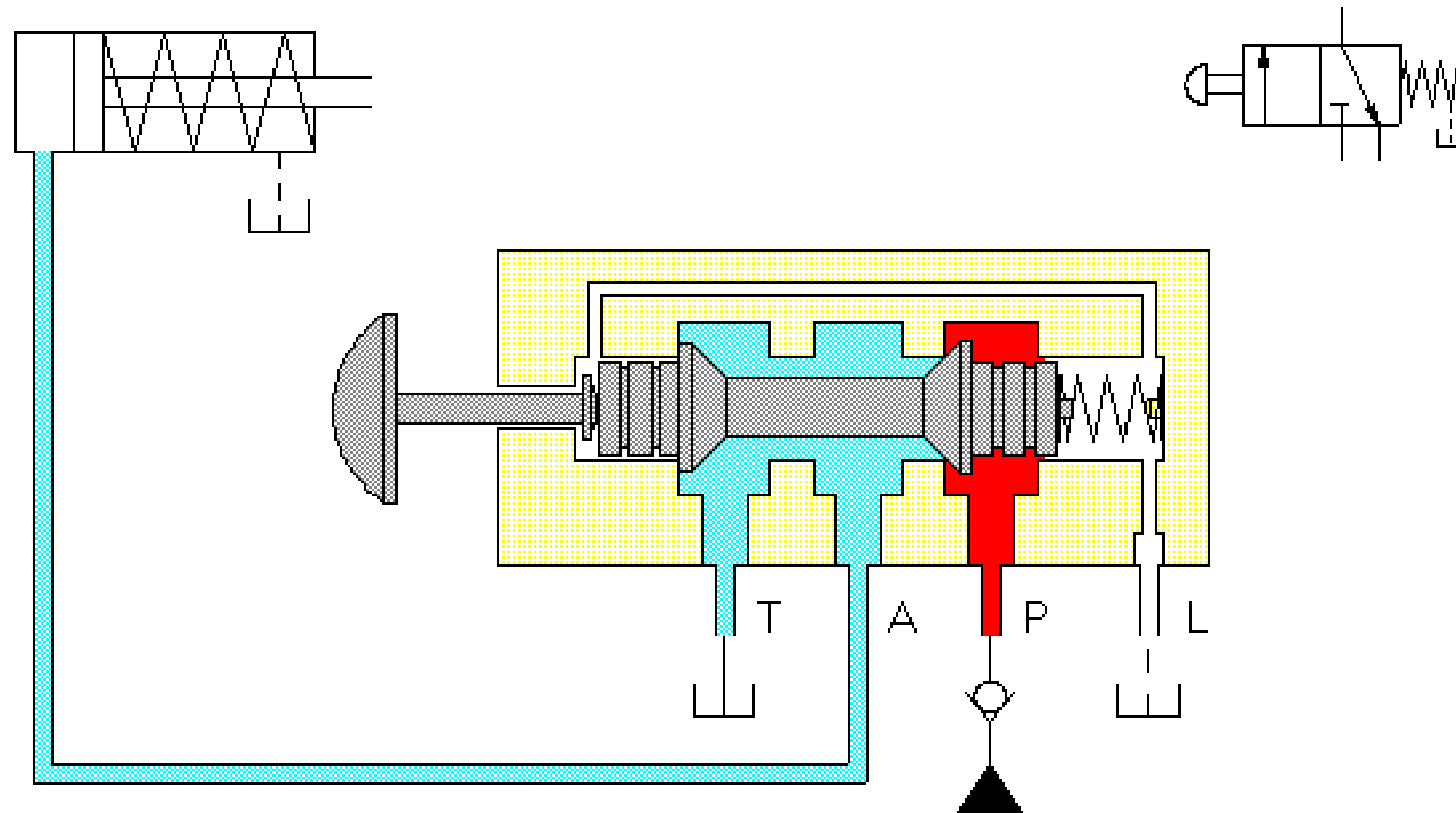
3/2 - way valve (poppet principle)



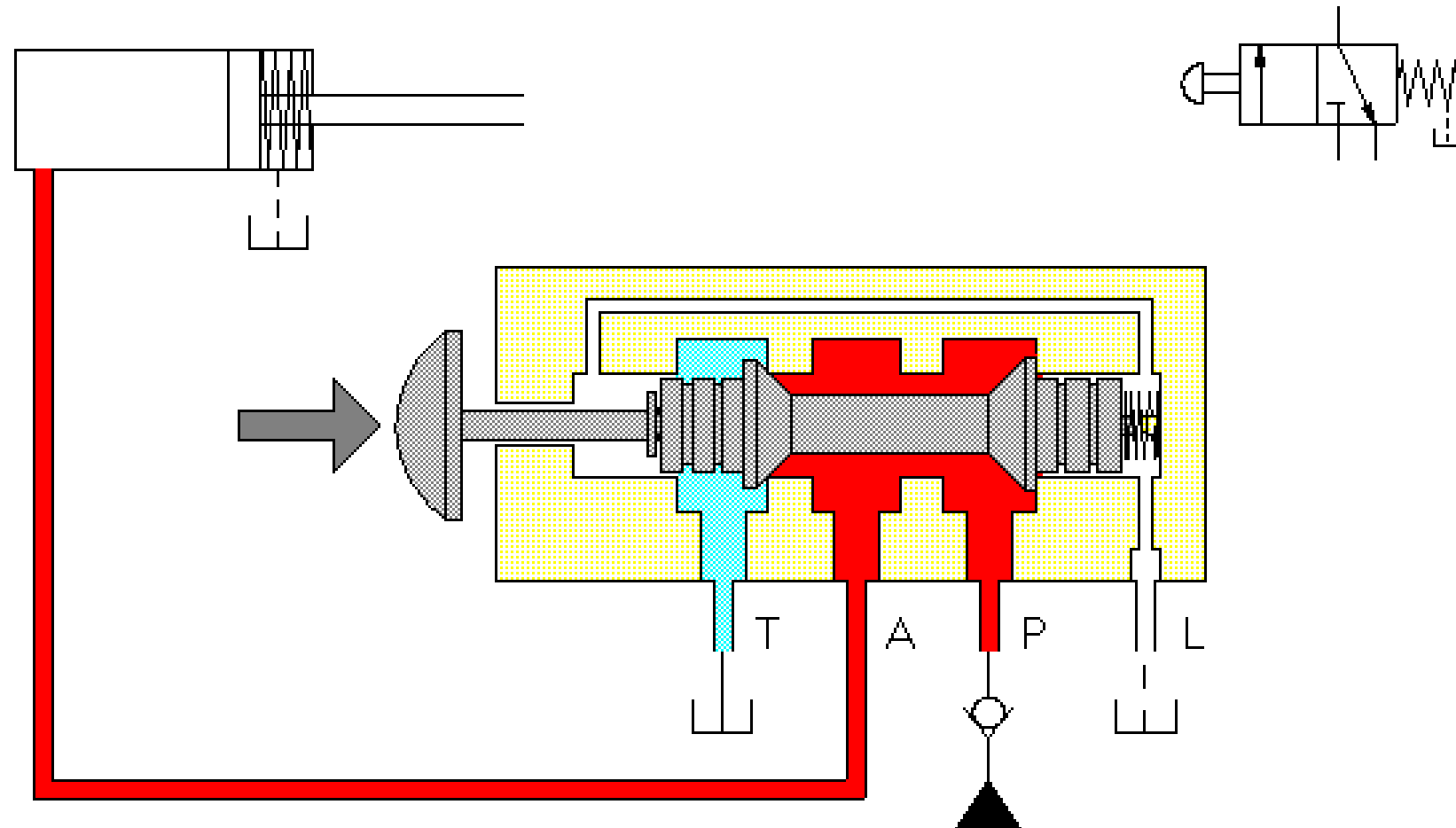
3/2 - way valve (slide principle)



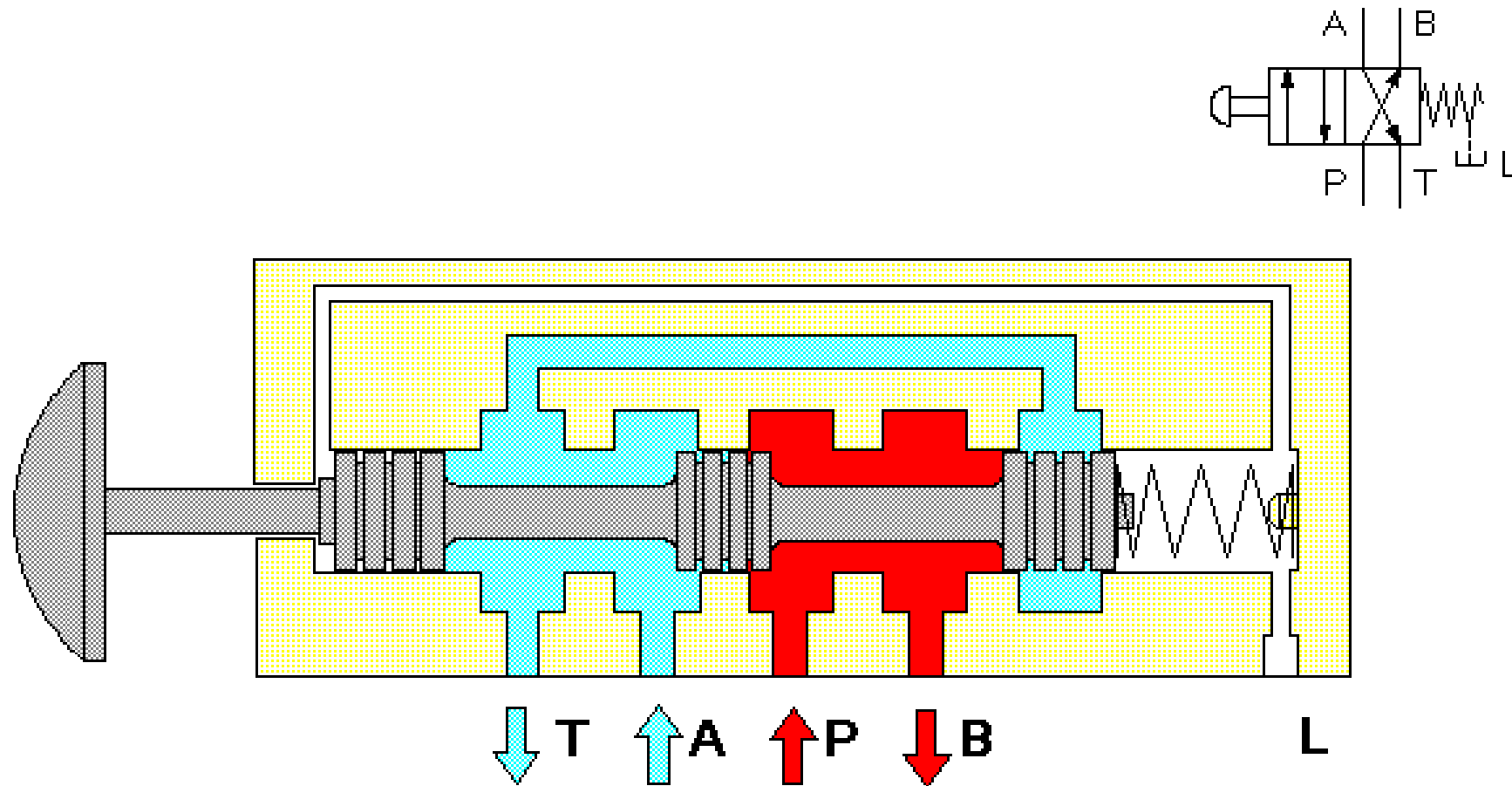
3/2 - way valve (slide principle)



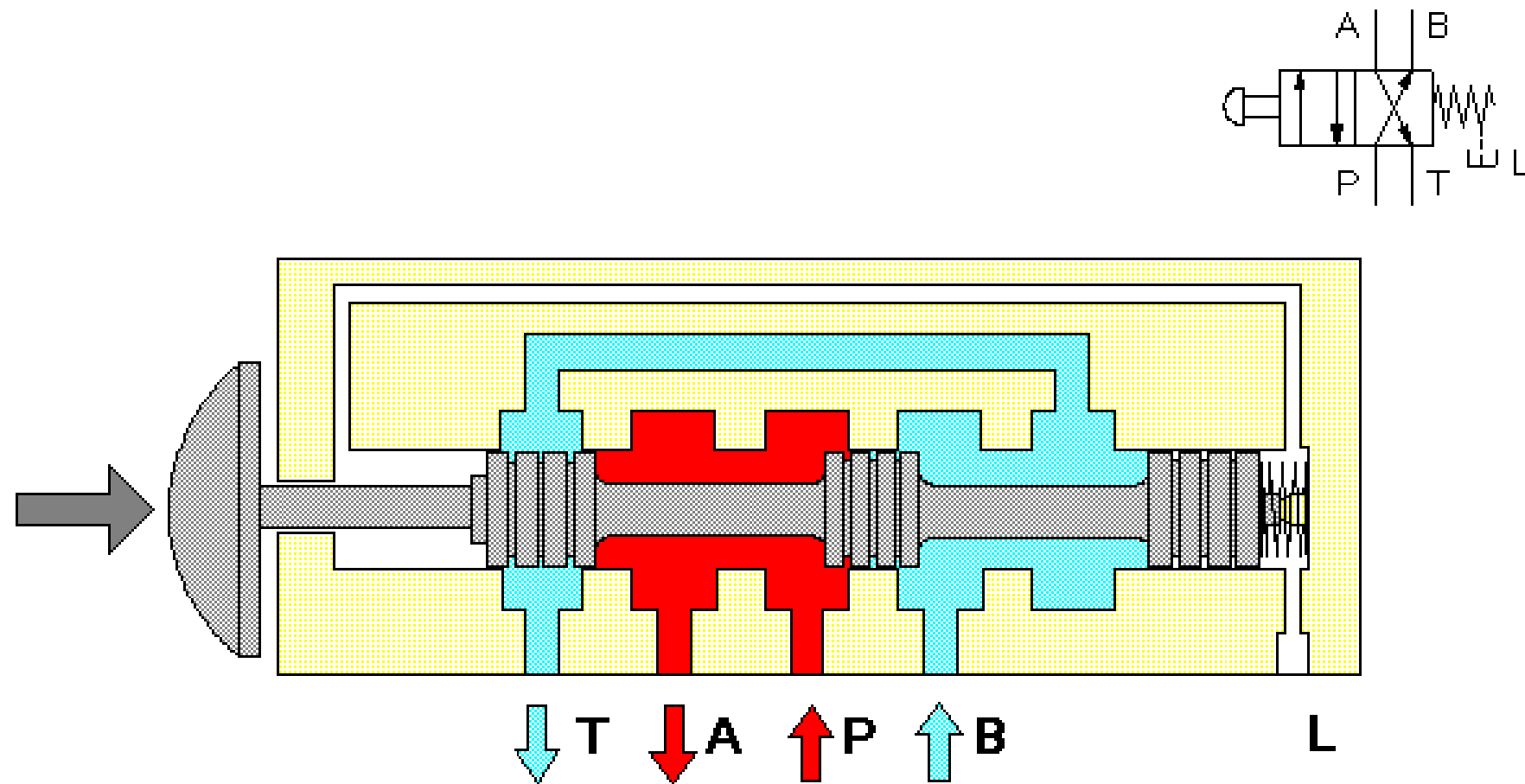
3/2 - way valve



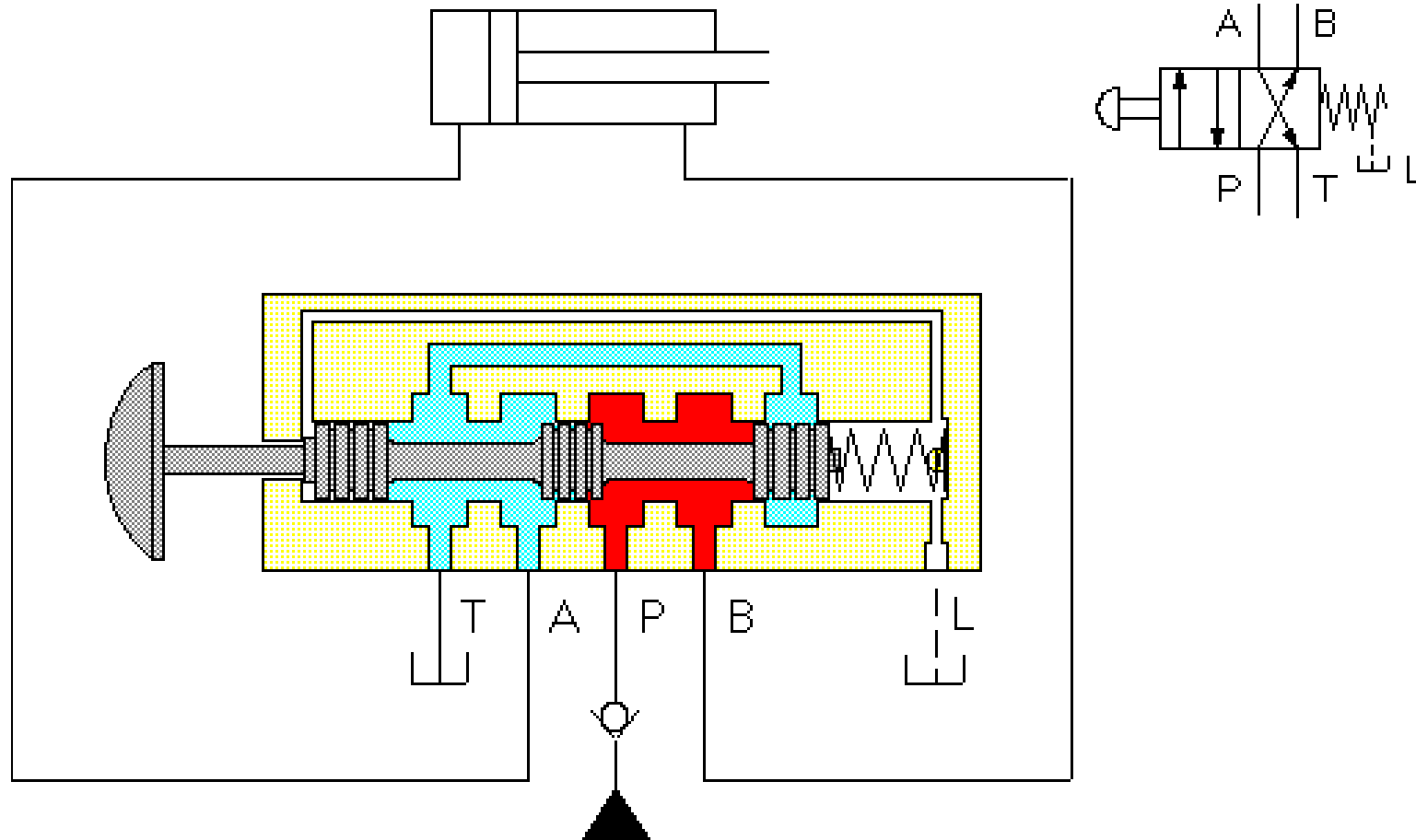
3/2 - way valve



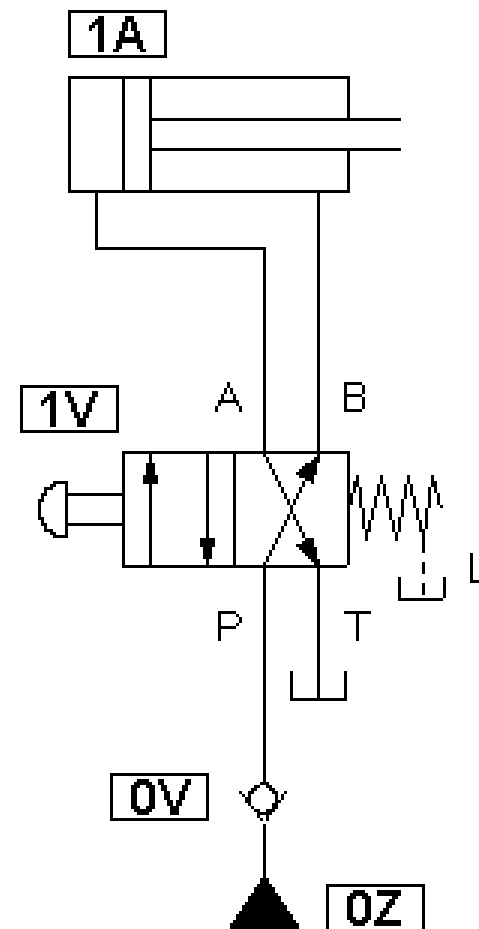
4/2 - way valve (with three pistons)



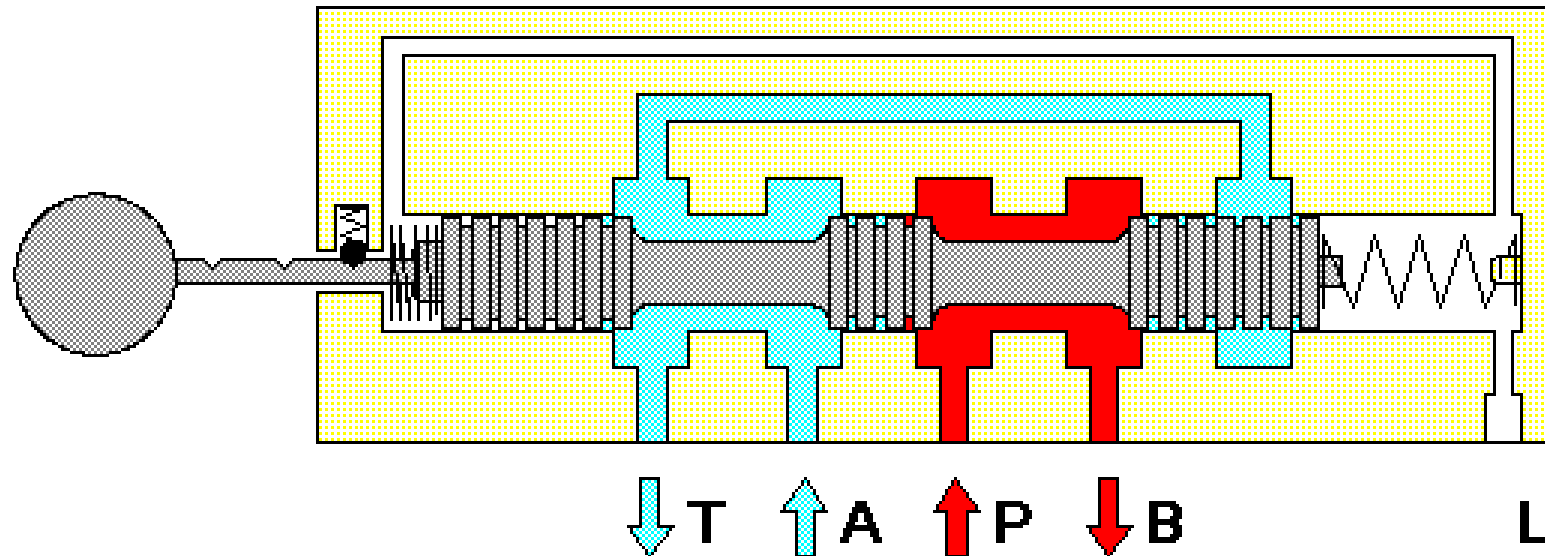
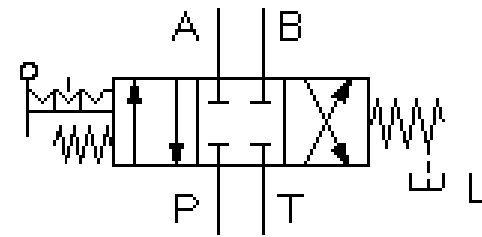
4/2 - way valve (with three pistons)



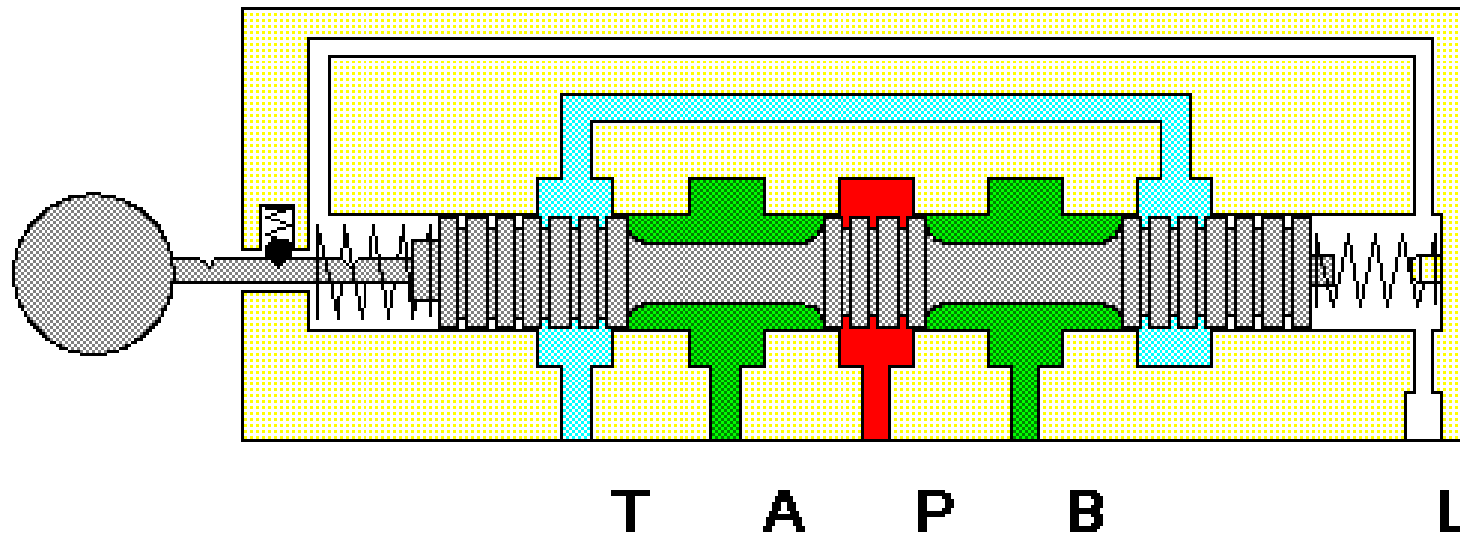
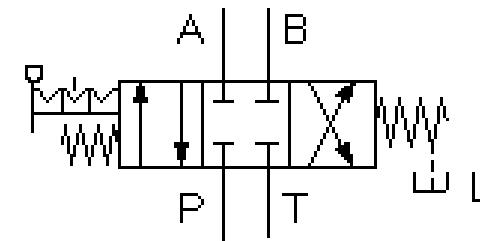
4/2 - way valve (with three pistons)



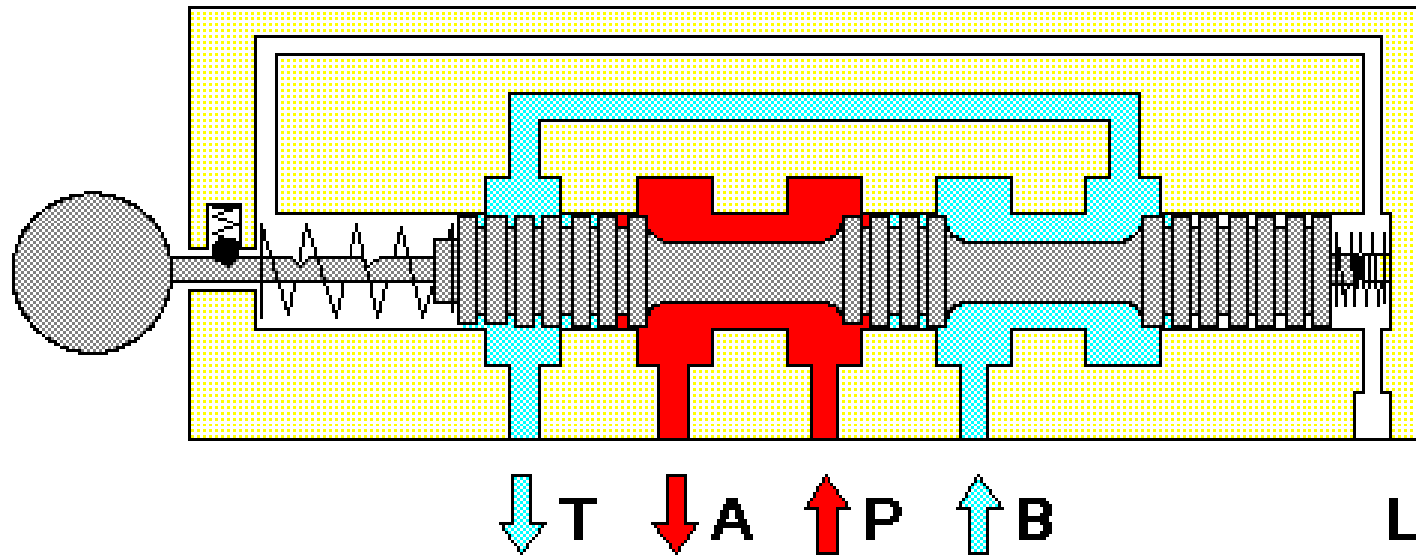
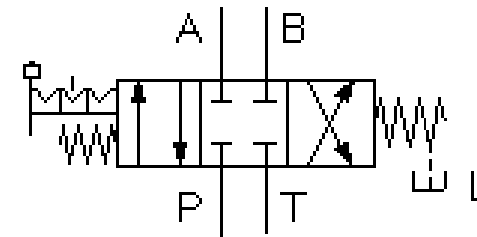
Circuit diagram: 4/2 - way valve



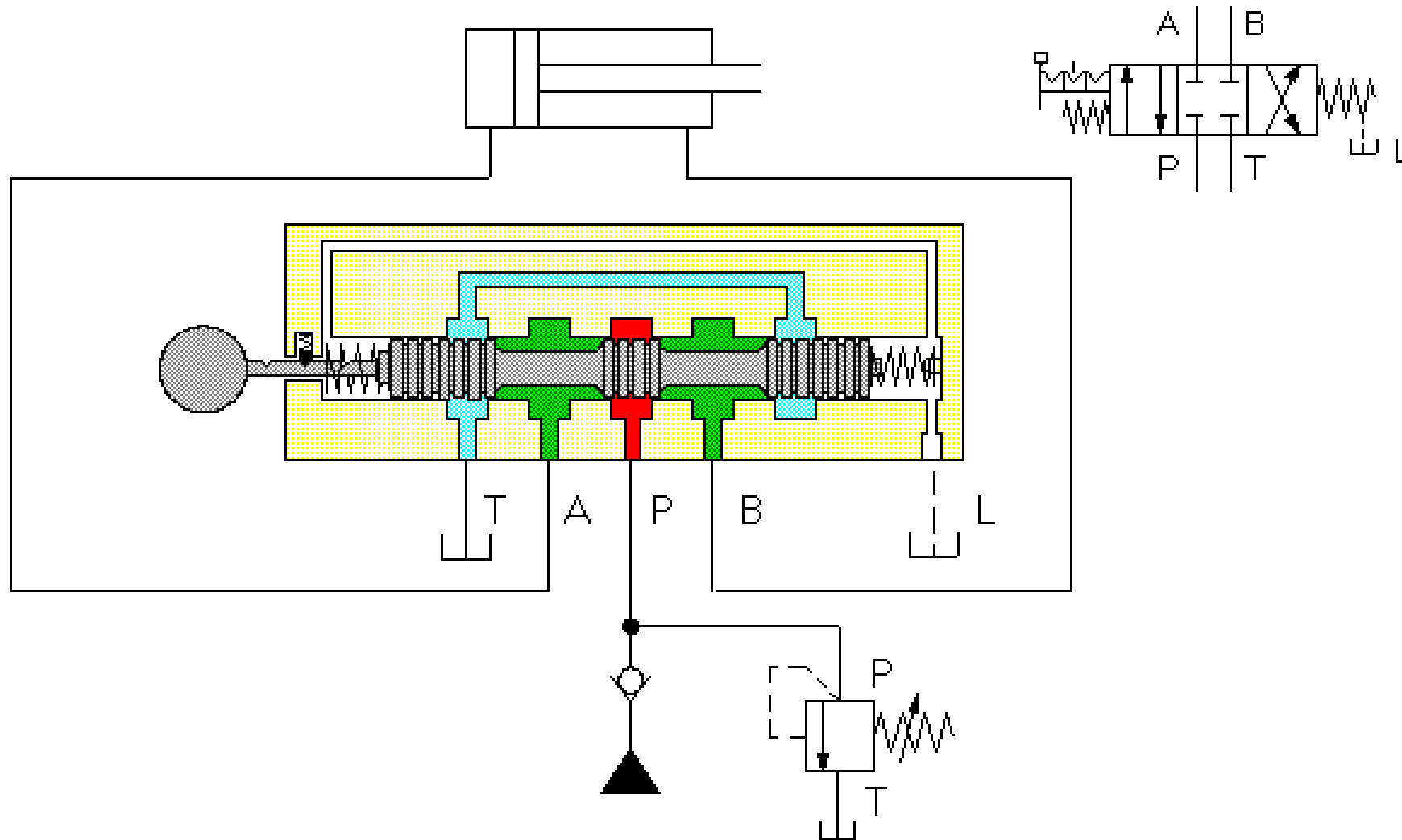
4/3 - way valve with closed mid-position



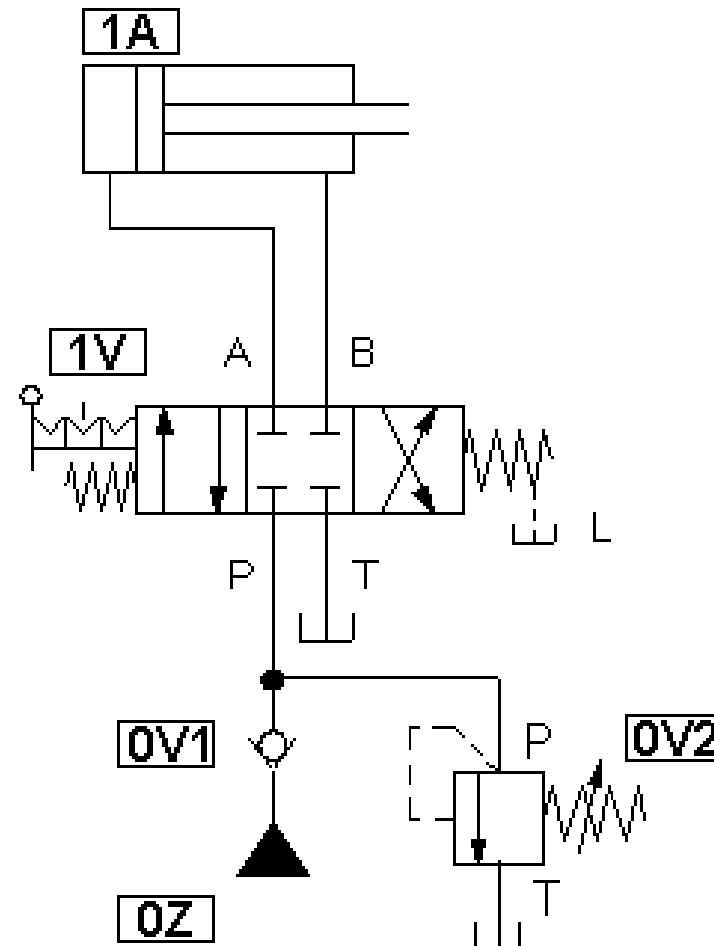
4/3 - way valve with closed mid-position



4/3 - way valve with closed mid-position



4/3 - way valve with closed mid-position



Circuit diagram:

4/3 - way valve with closed mid-position

